

Villa del Monte
Neighborhood Revitalization Workshop

Welcome!



VILLA DEL MONTE REVITALIZATION/ADA STUDY

Workshop #2

Agenda

- Welcome
- Rules of Conduct
- Results from Workshop 1
- Neighborhood Improvements
- Prioritize Neighborhood Improvements
- 10 Minute Break
- Next Steps

VILLA DEL MONTE REVITALIZATION/ADA STUDY

Workshop #2

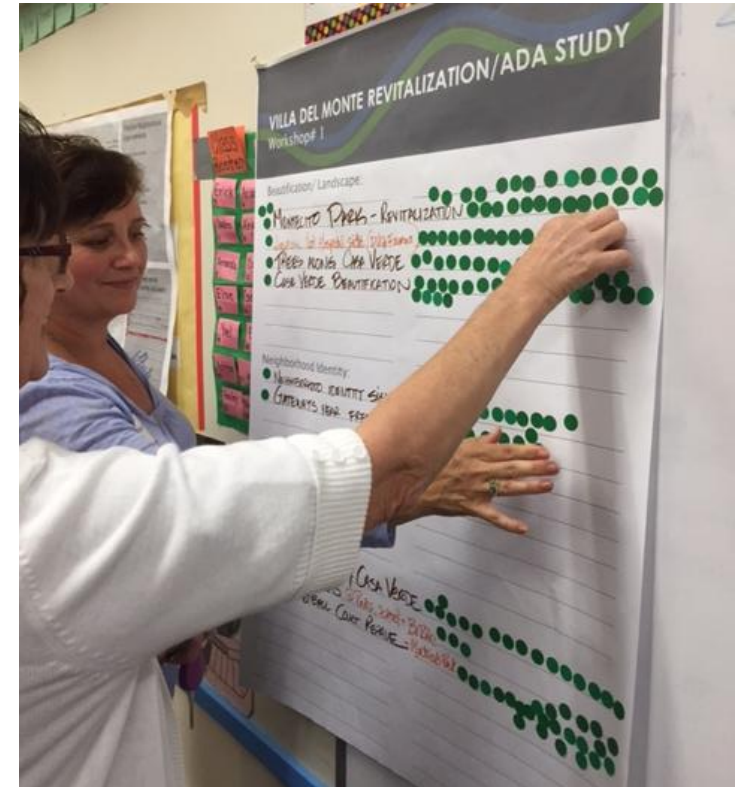
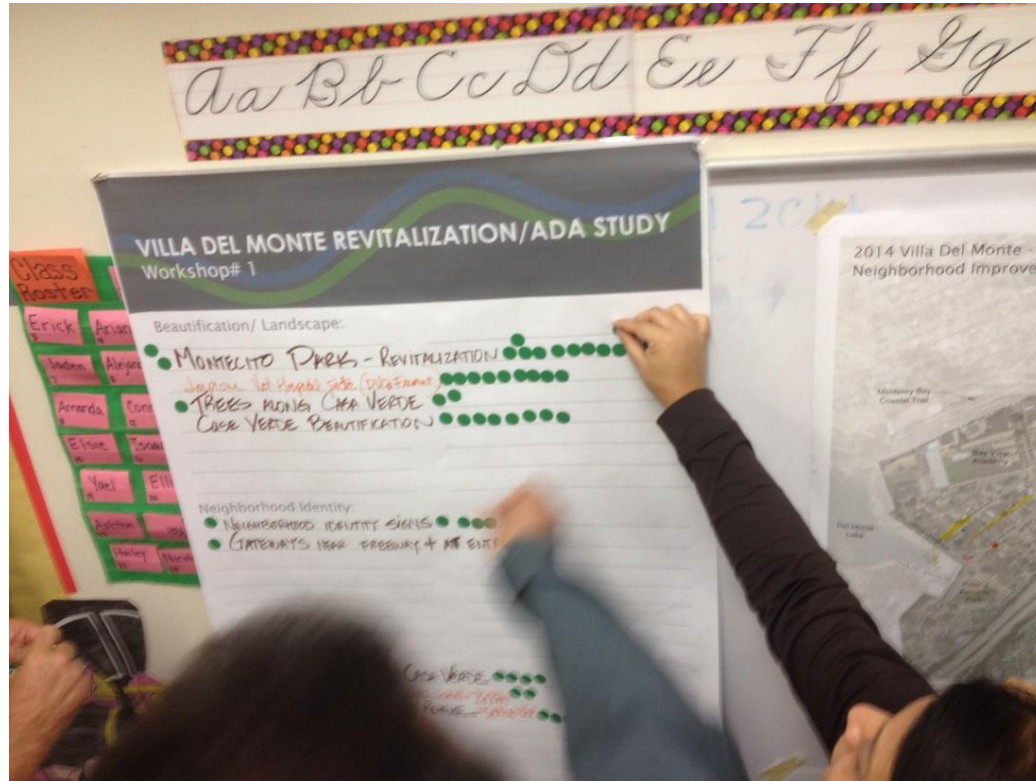
Rules of Conduct

1. Listen actively - respect others when they are talking
2. Focus on ideas for neighborhood improvement
3. Participate to your fullest ability – neighborhood cooperation depends on everyone
4. Work towards consensus not conflict

VILLA DEL MONTE REVITALIZATION/ADA STUDY

Workshop #2

Results from Workshop 1



VILLA DEL MONTE REVITALIZATION/ADA STUDY
Workshop #2

Results from Workshop 1

	Green Dot	Red Dot
Beautification/Landscape		
Casa Verde Beautification	33	0
Montecito Park- Revitalization	30	0
Improve Vet Hospital side (Dela Vina @ Fremont)	14	0
Trees along Casa Verde	12	0
Recreation		
Basketball Court repaving	29	0
Bike path along Casa Verde	28	0
Bike racks @ Parks, Schools + BiRite	7	0
Misc.		
Underground Utilities	25	2
Parking Permits	19	3
Noise Abatement	7	0
Traffic Calming		
Traffic Circle @ Encina	20	0
Encina traffic calming	19	0
Dela Vina + Fremont (don't yield to people)	7	0
Casa Verde/ Fremont (just before intersection)	4	0
Along Del Monte- left turn signal	3	0
L Stopping causes conflict- cont from left-	0	0
Neighborhood Identity		
Neighborhood Identity Signs	17	0
Gateways near freeways & at entries	11	0
Safety Improvements		
Calm traffic along Dela Vina. Lots of driveways	16	0
Sidewalk repair along Casa Verde	14	0
Helvic + Portola + Casa Verde issues	12	0
Streetlights by Portola + Palo Verde	8	0
Overgrown trees along alleys	6	0



Workshop Results are posted at the City Website:

<http://monterey.org/en-us/Departments/Plans-Public-Works/Planning/Planning-Projects/Villa-Del-Monte-Neighborhood-Plan>

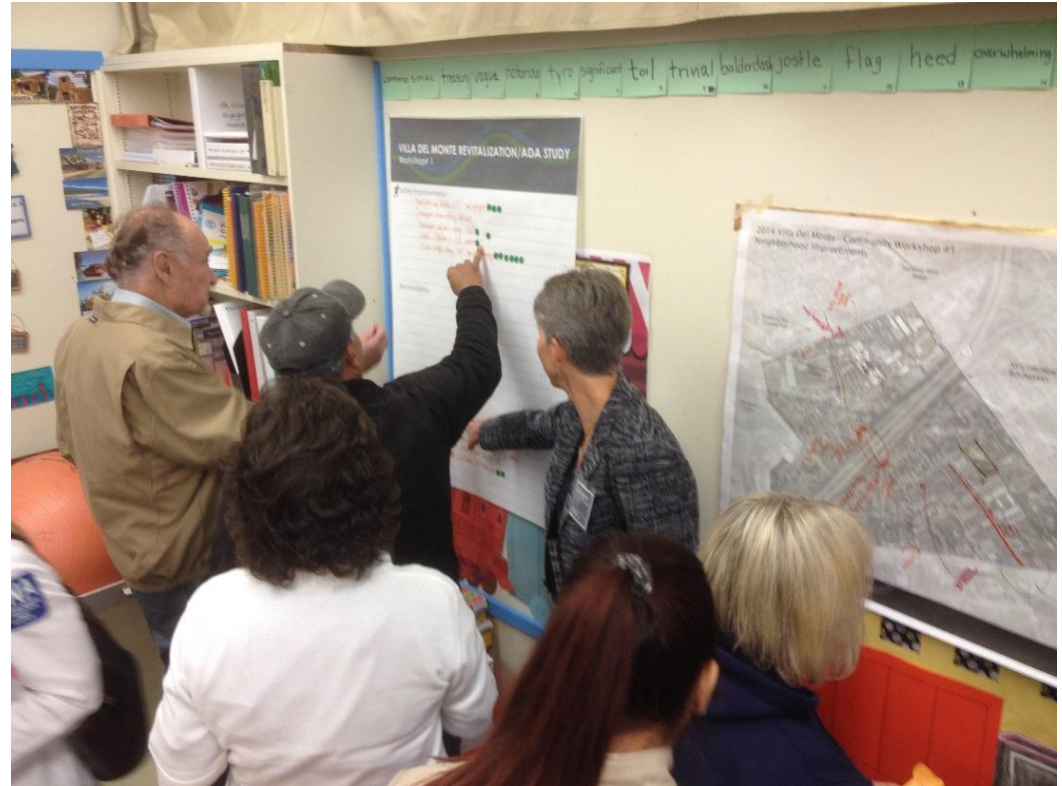
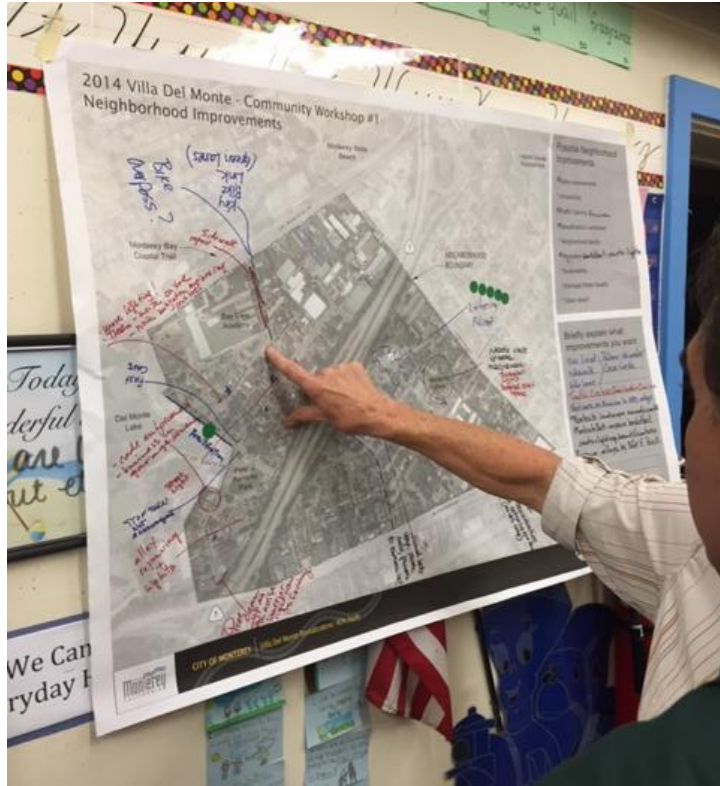
VILLA DEL MONTE REVITALIZATION/ADA STUDY
Workshop #2

Results from Workshop 1

Top items from Tape Dot Exercise:

- Casa Verde Beautification
 - Bike path along Casa Verde
 - Underground Utilities
 - Sidewalk repair
 - Street trees
- Montecito Park Revitalization
 - Basketball repaving
- Traffic calming
 - Encina & Dela Vina
 - Helvic, Portola, Casa Verde
- Parking Permits
- Neighborhood Identity Signs
 - Gateways near freeways & at entries

Results from Workshop 1



VILLA DEL MONTE REVITALIZATION/ADA STUDY

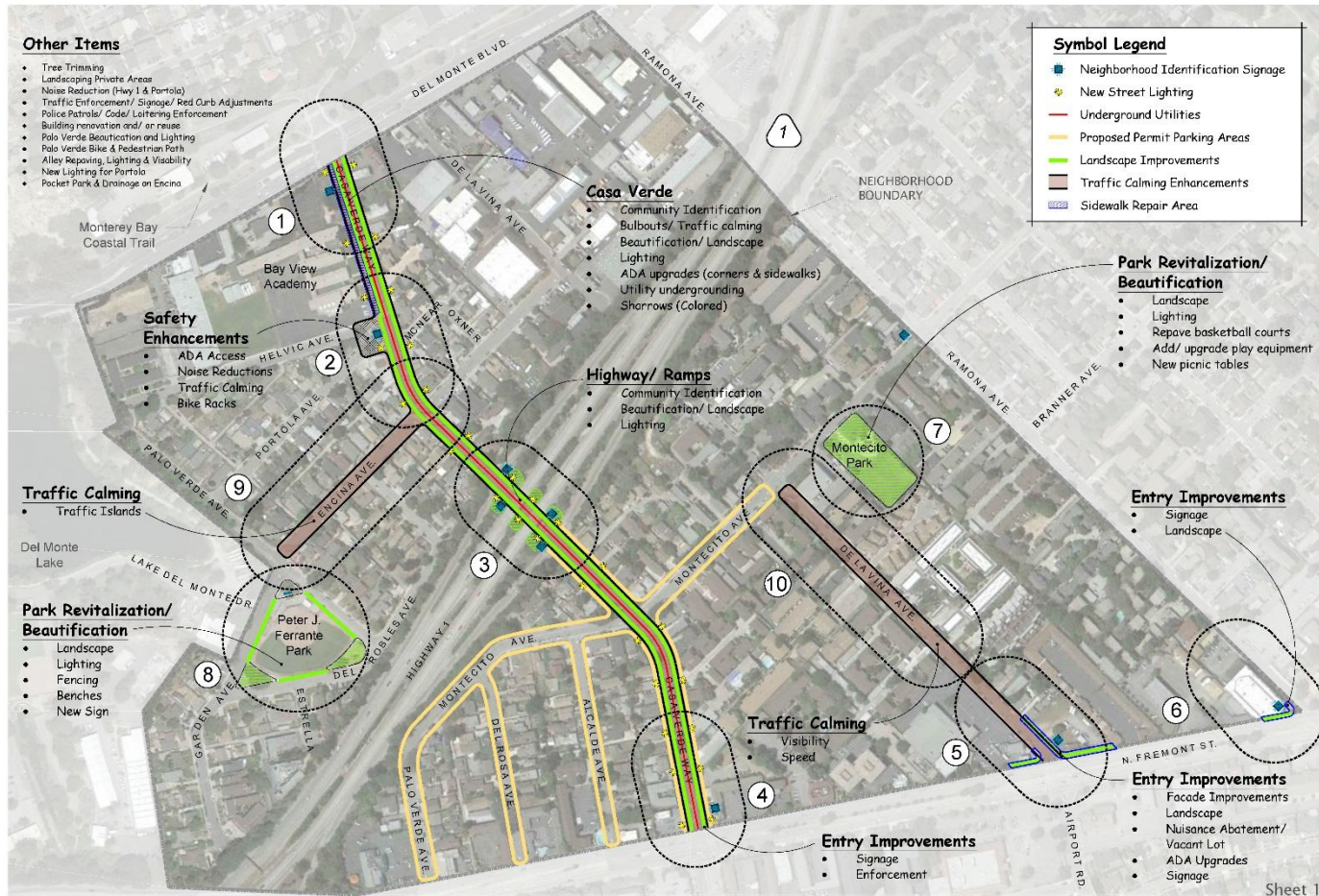
Workshop #2

Results from Workshop 1

Top items from Neighborhood Map Exercise:

- Casa Verde Beautification
 - Bike Racks on Casa Verde
 - Highway 1 entry enhancements
- Montecito Park Revitalization
- Lighting and Landscape Improvement Areas
- Safety and Traffic Calming
 - Traffic & safety issues
 - Repaving locations
 - Signage recommendations
 - Problems pulling out of driveways
 - ADA concerns
- Neighborhood Identity Signs
 - Entry feature locations

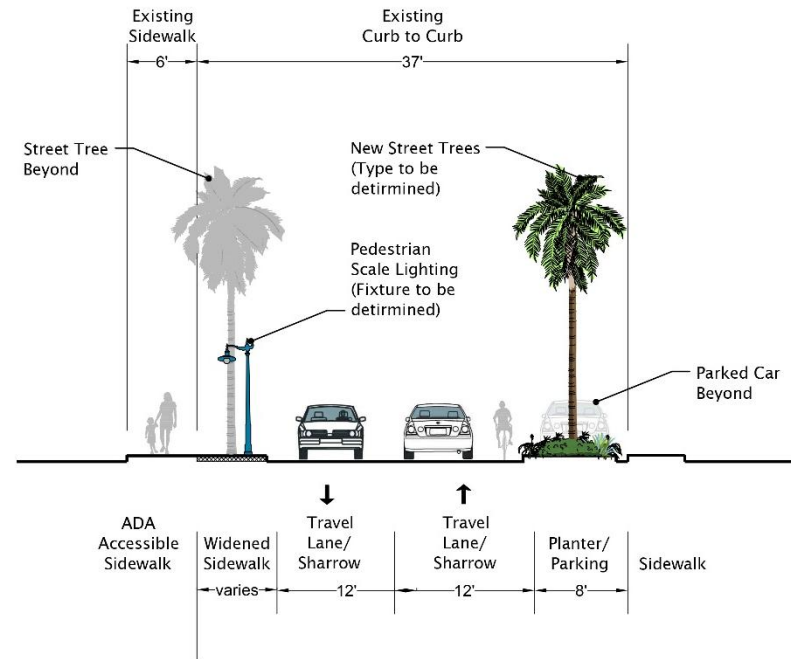
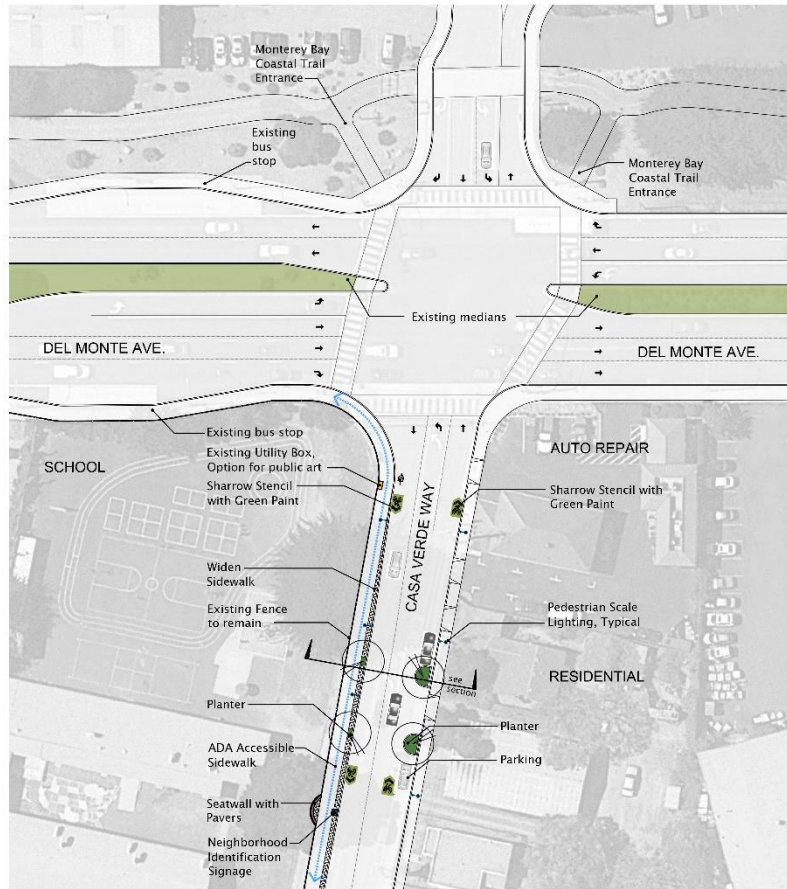
Overall Concept Plan



VILLA DEL MONTE REVITALIZATION/ADA STUDY

Workshop #2

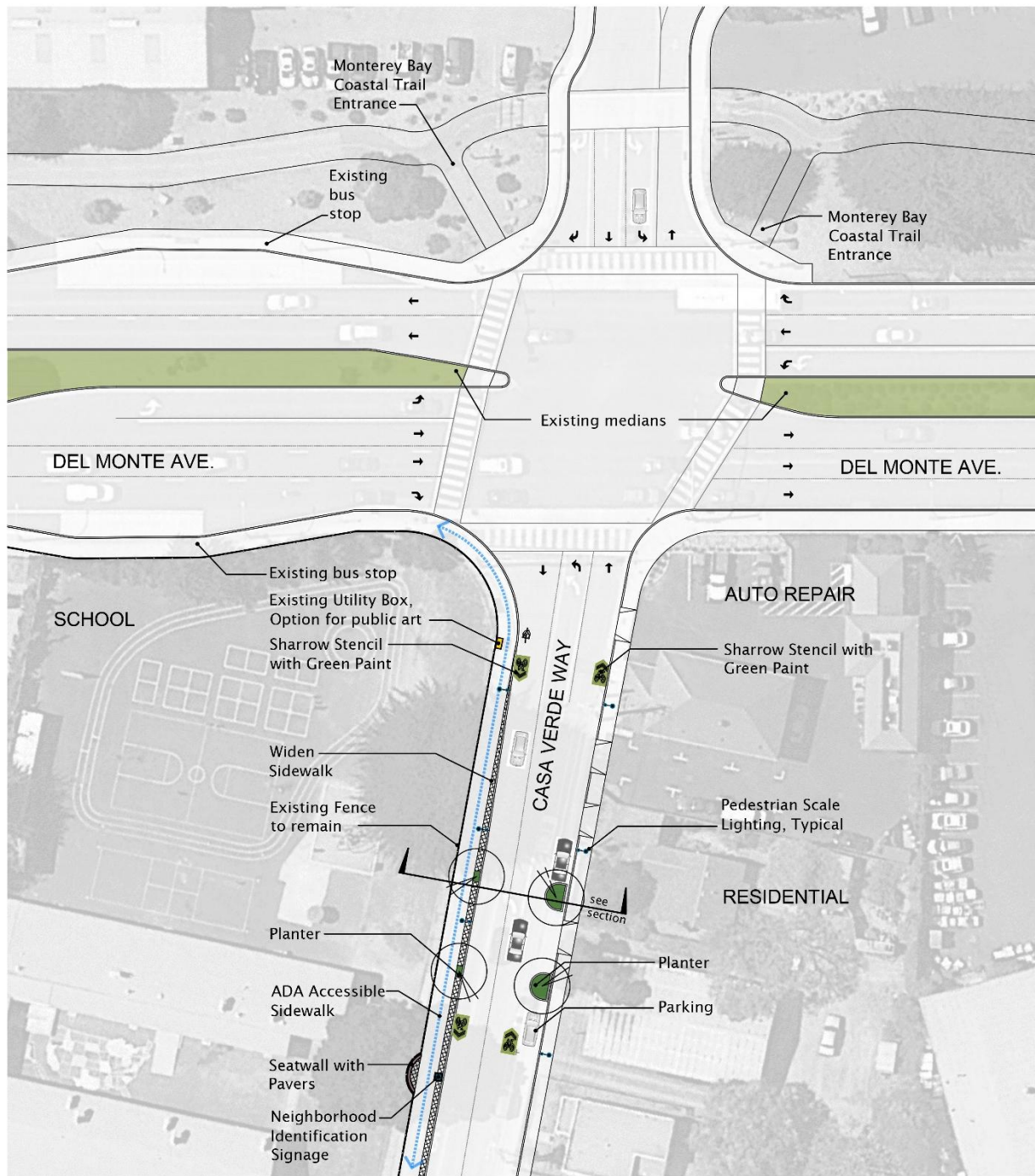
Area 1- Casa Verde @ Del Monte



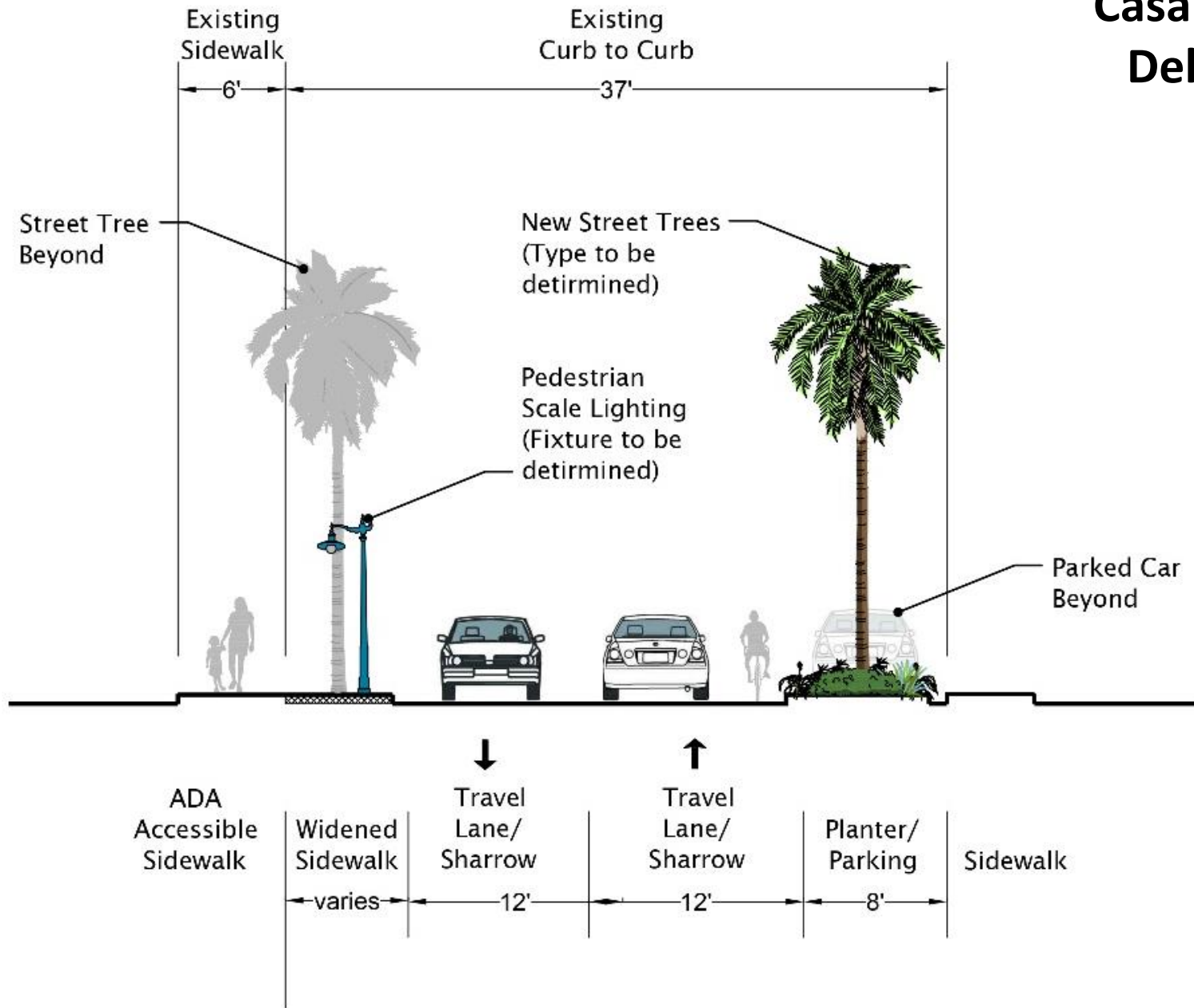
VILLA DEL MONTE REVITALIZATION/ADA STUDY

Workshop #2

Area 1- Casa Verde @ Del Monte

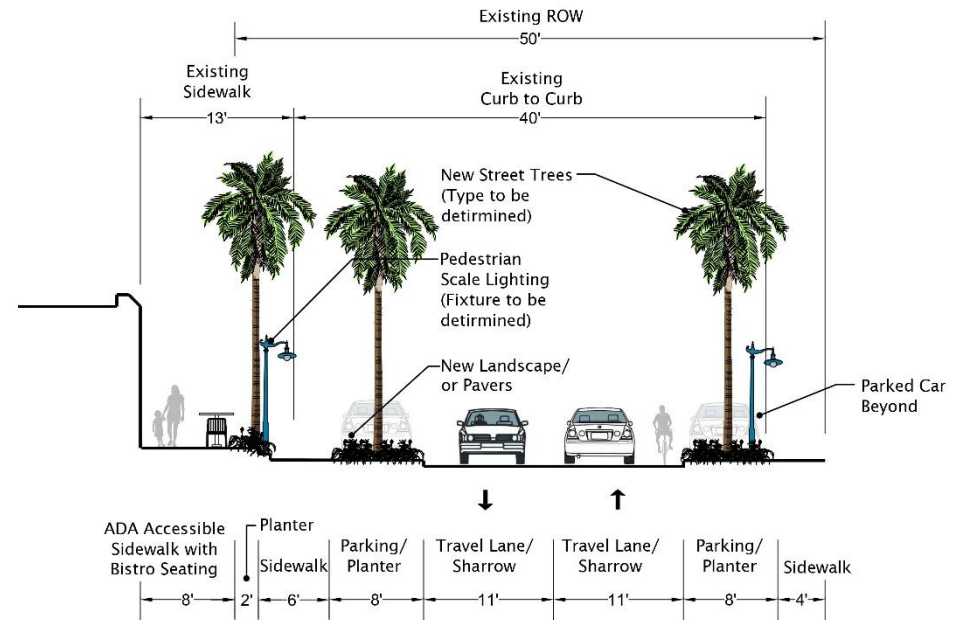
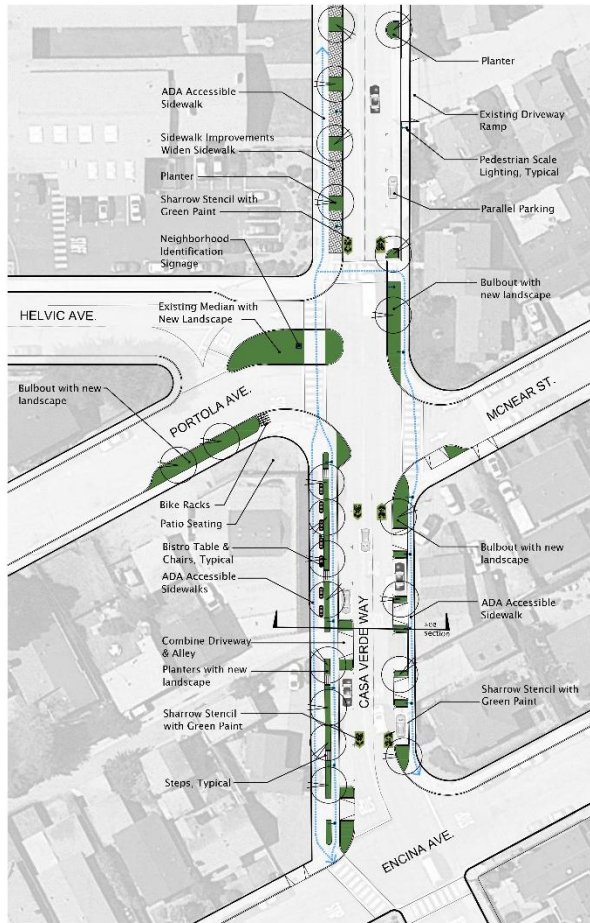


Area 1- Casa Verde @ Del Monte

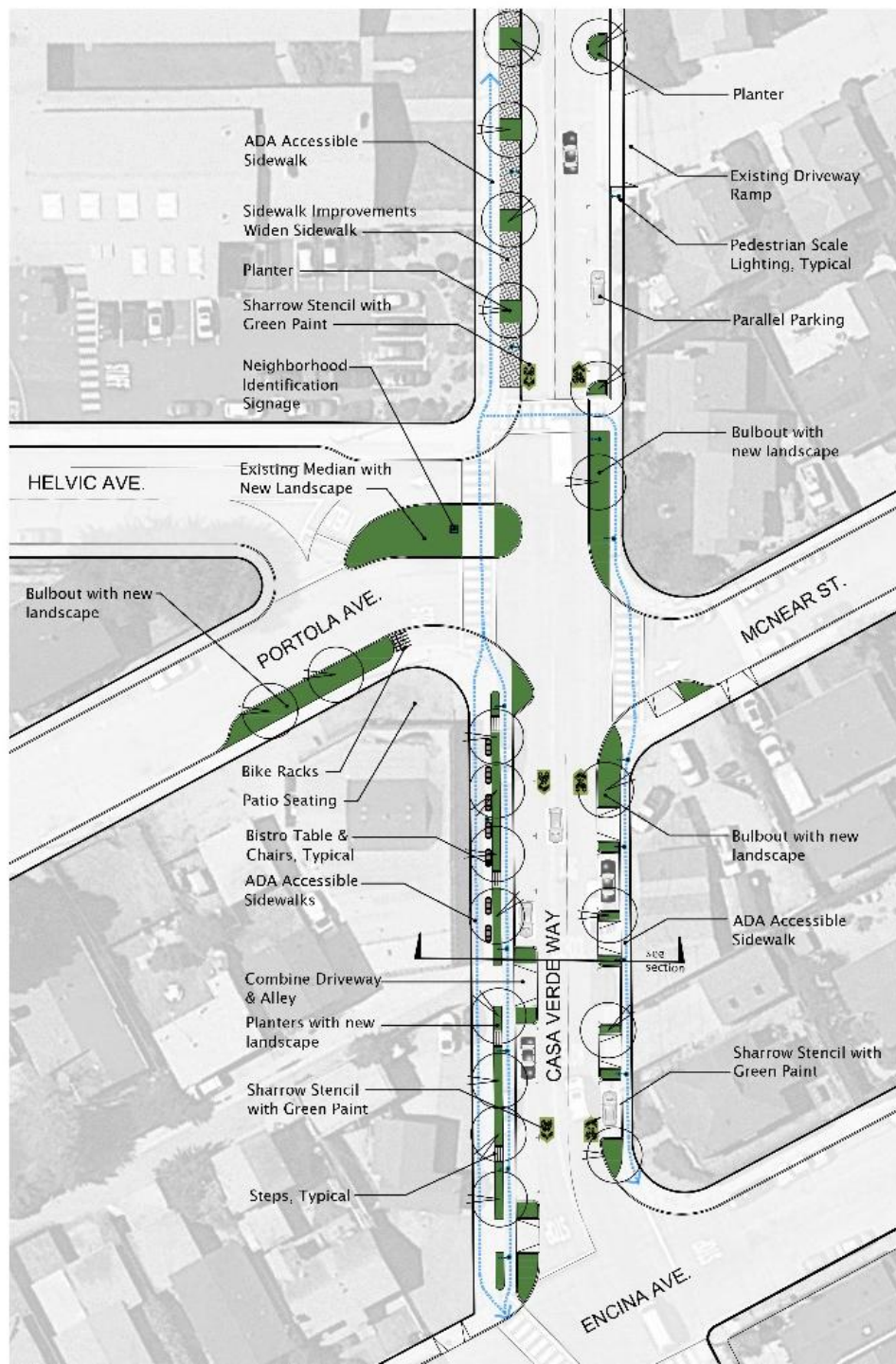


Area 2 – Casa Verde @ Bi-Rite

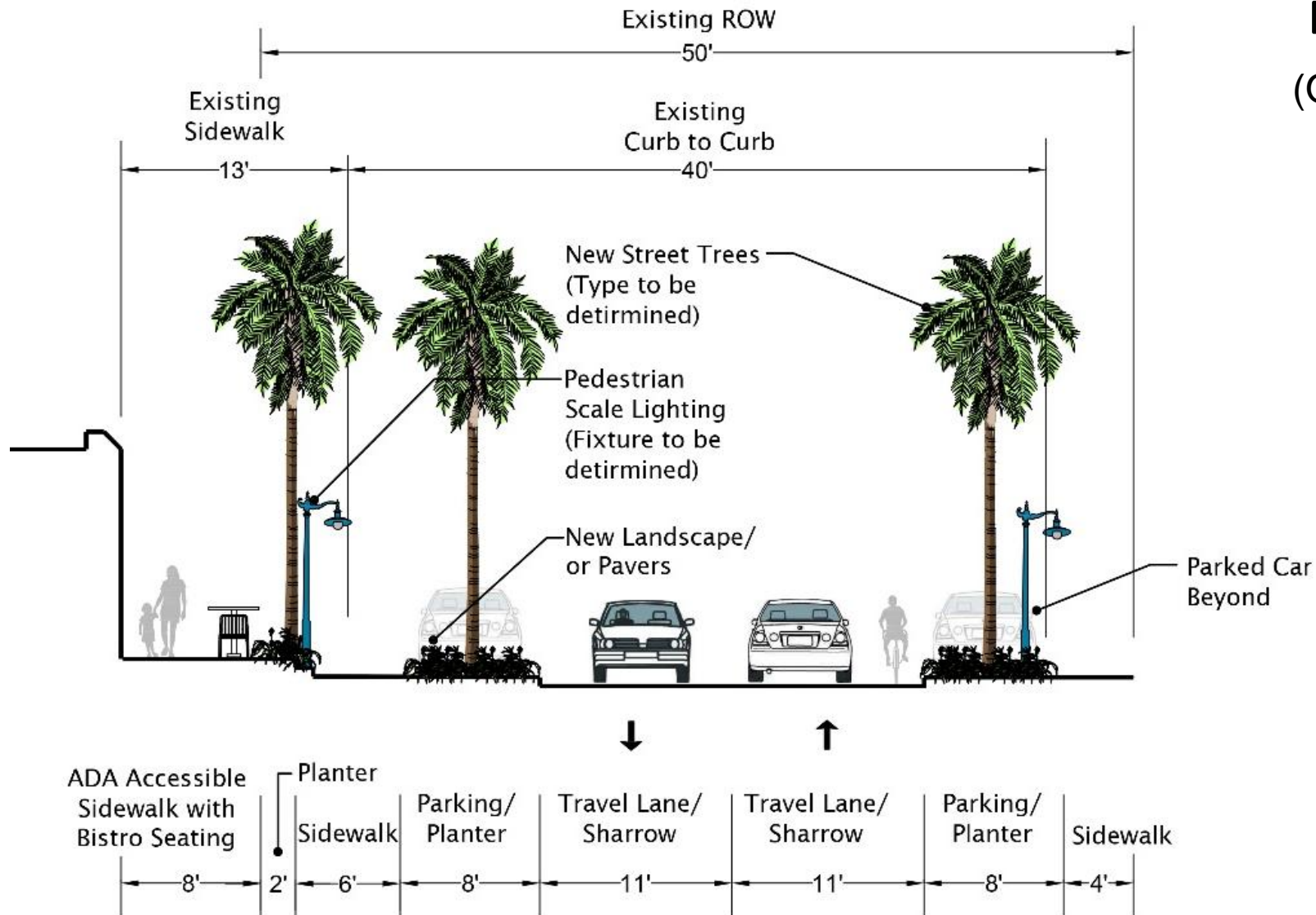
(Option A)



Area 2 – Casa Verde @ Bi-Rite (Option A)

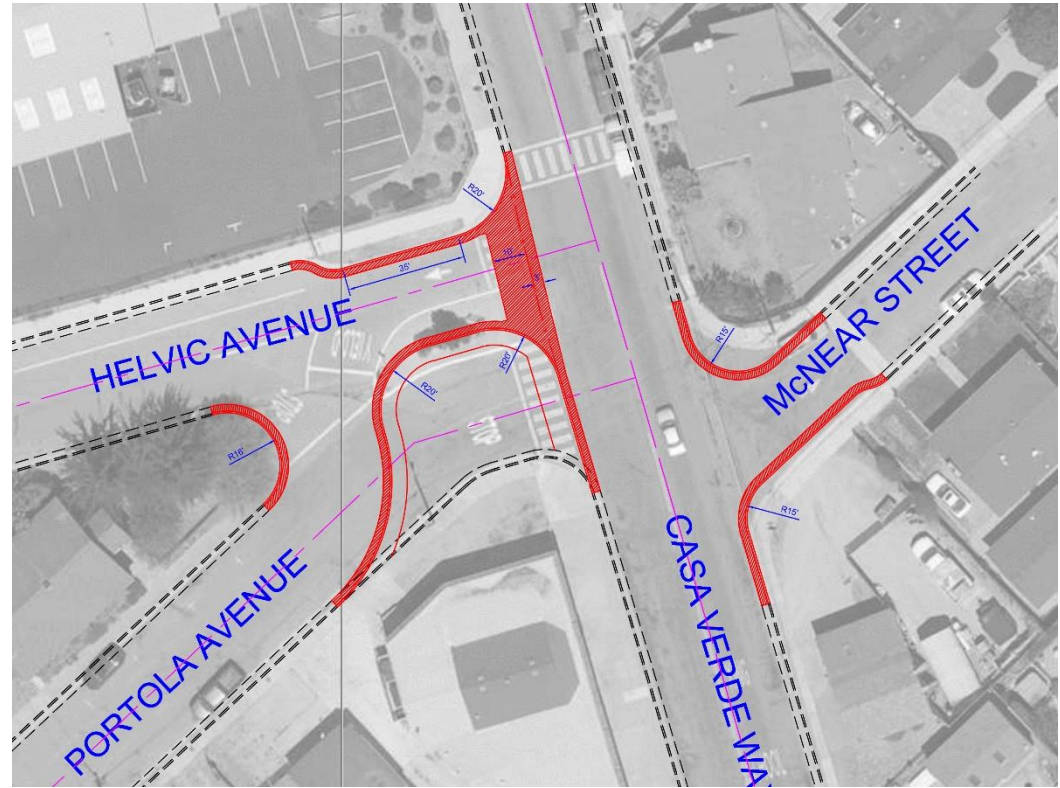
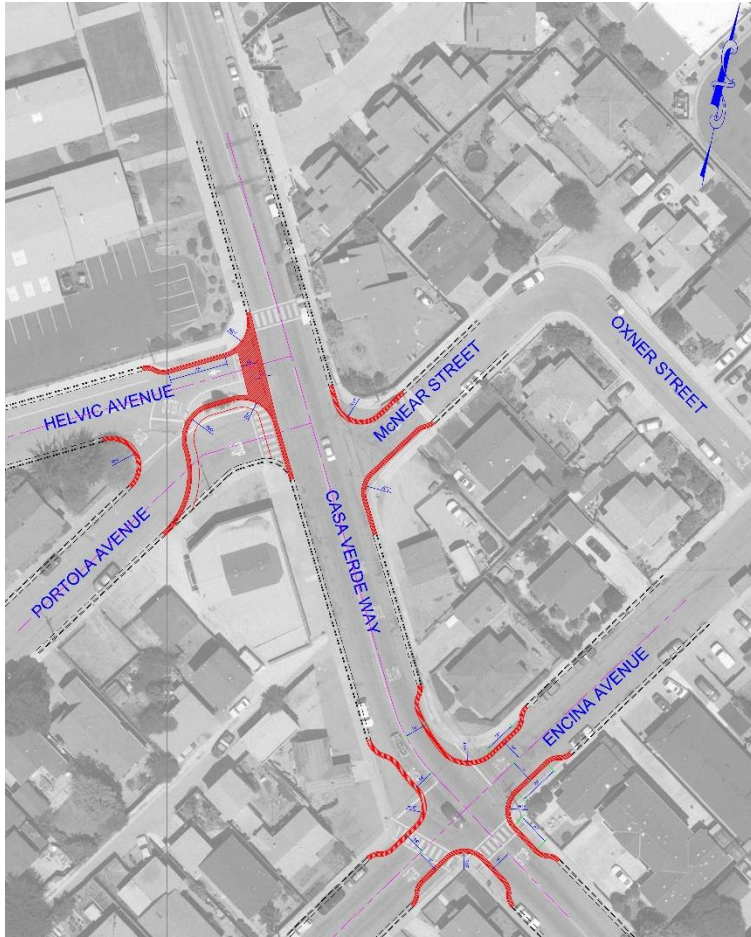


Area 2 – Casa Verde @ Bi-Rite (Option A)



Area 2 – Casa Verde @ Bi-Rite

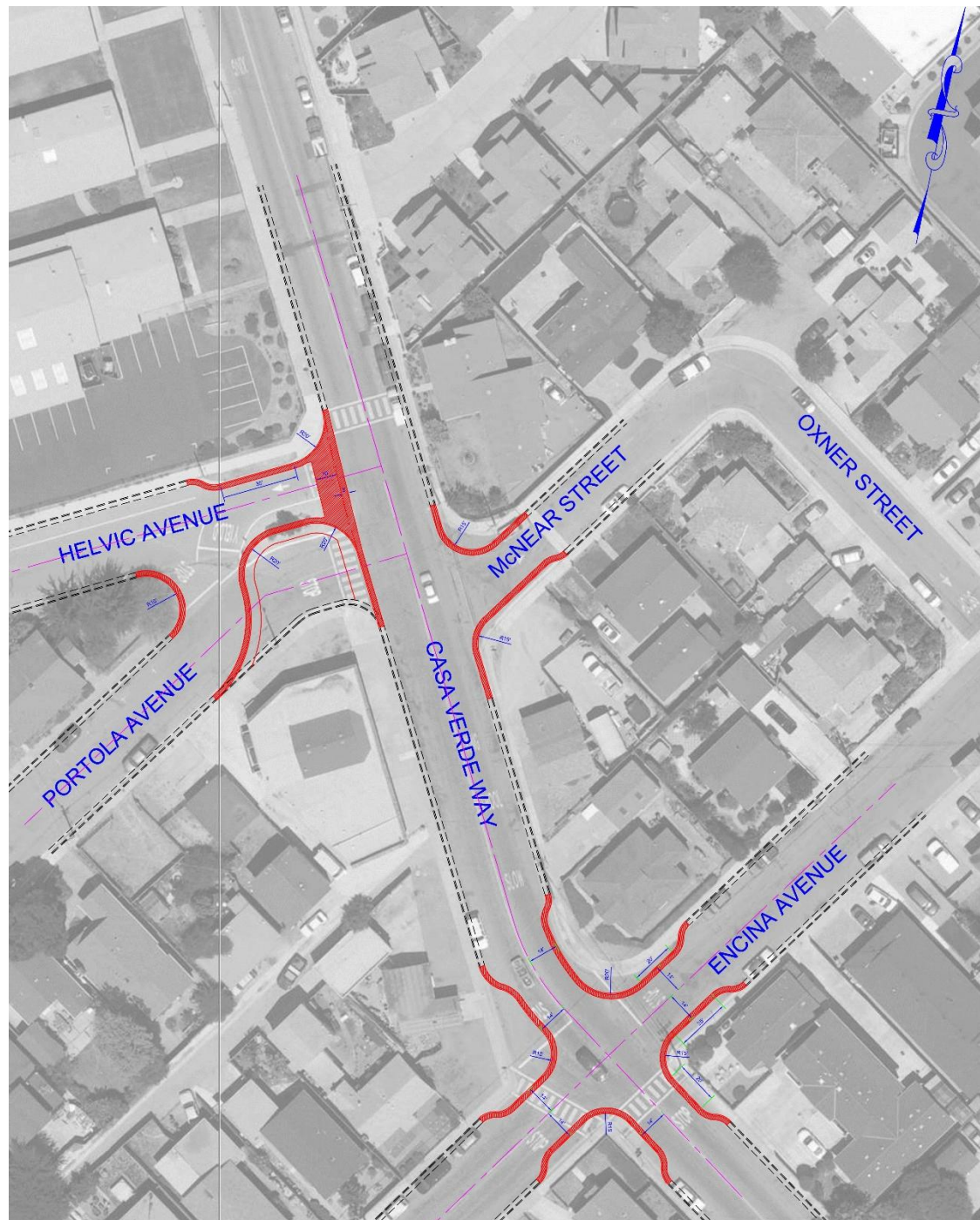
(Option B)



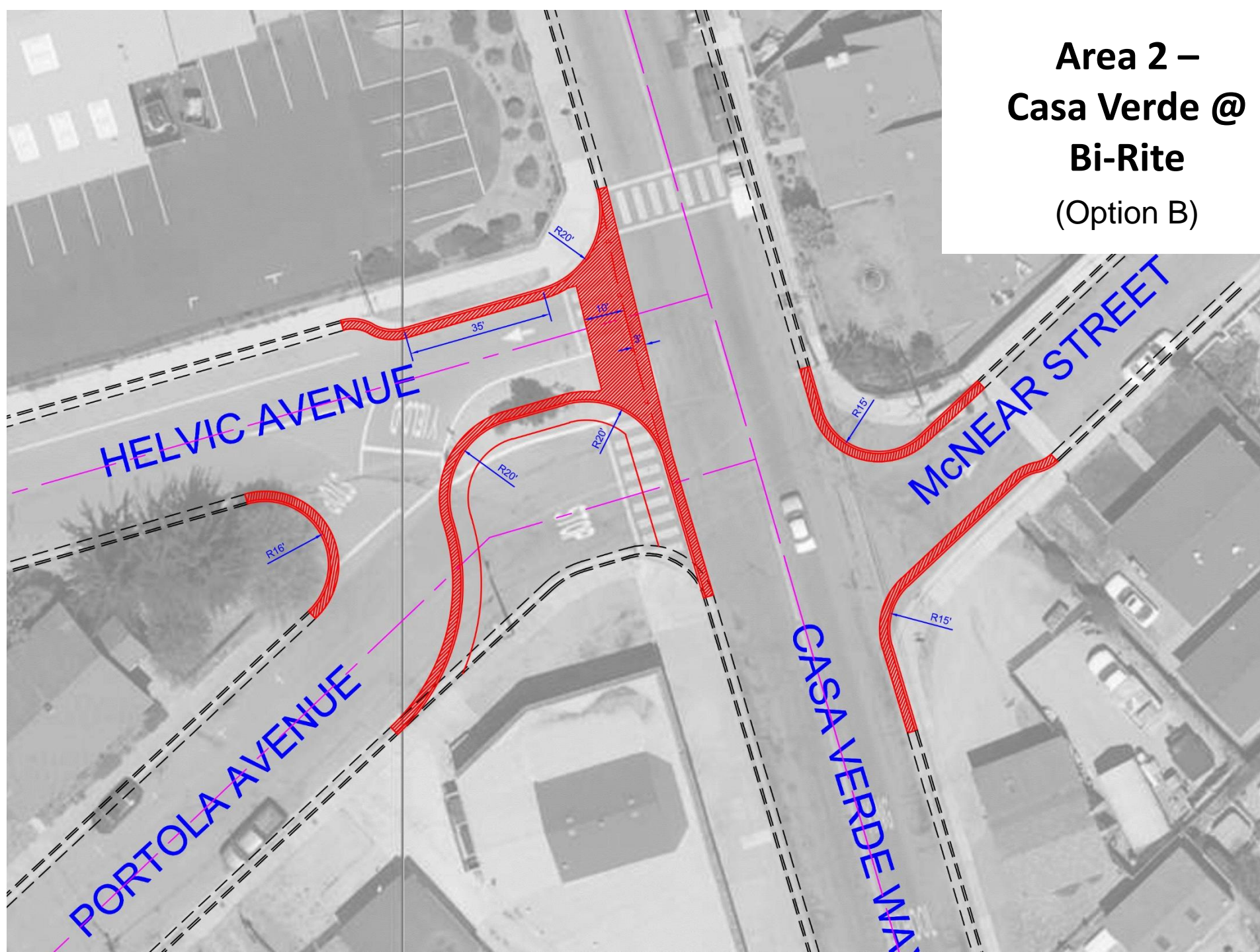
VILLA DEL MONTE REVITALIZATION/ADA STUDY

Workshop #2

**Area 2 –
Casa Verde @
Bi-Rite
(Option B)**

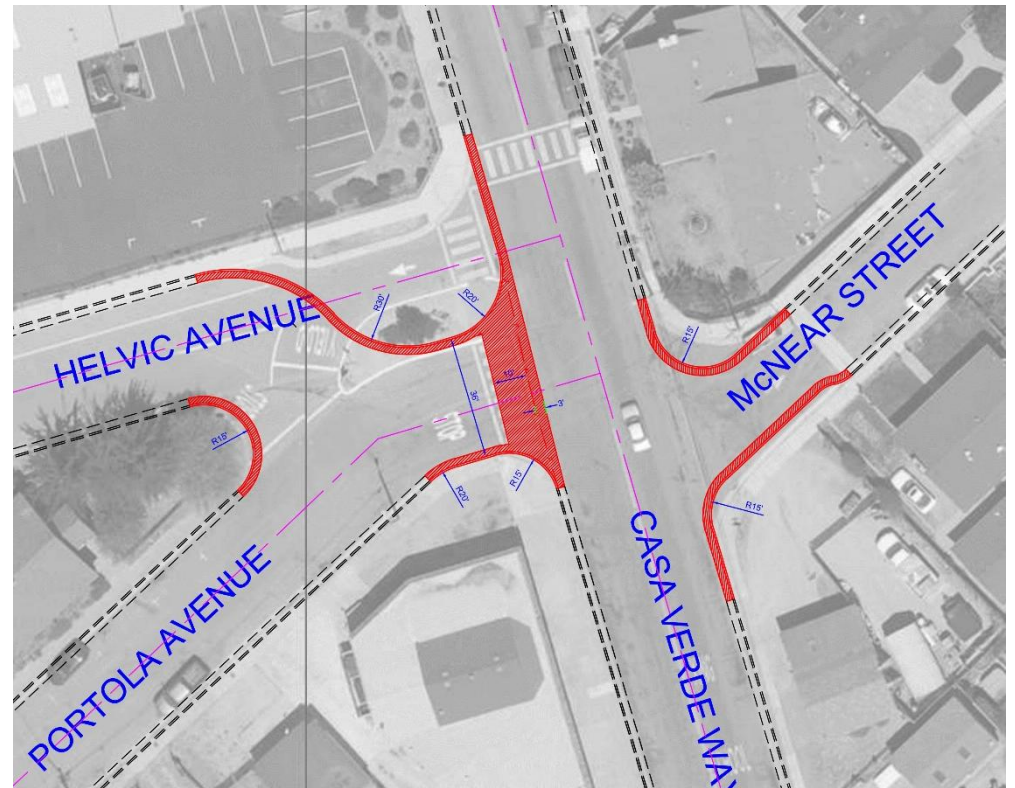
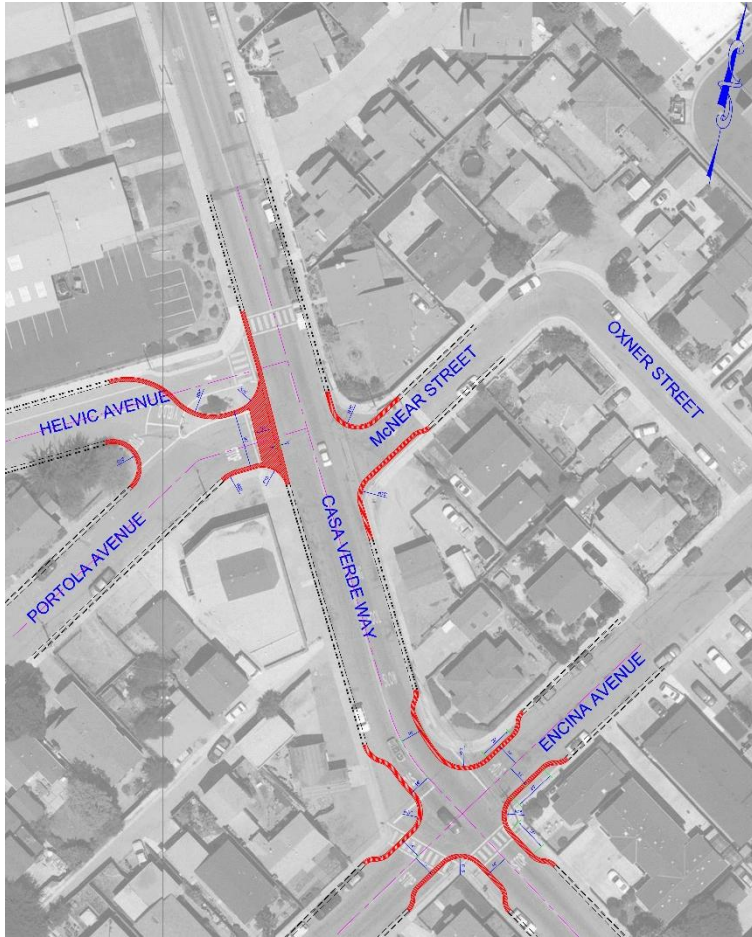


**Area 2 –
Casa Verde @
Bi-Rite
(Option B)**



Area 2 – Casa Verde @ Bi-Rite

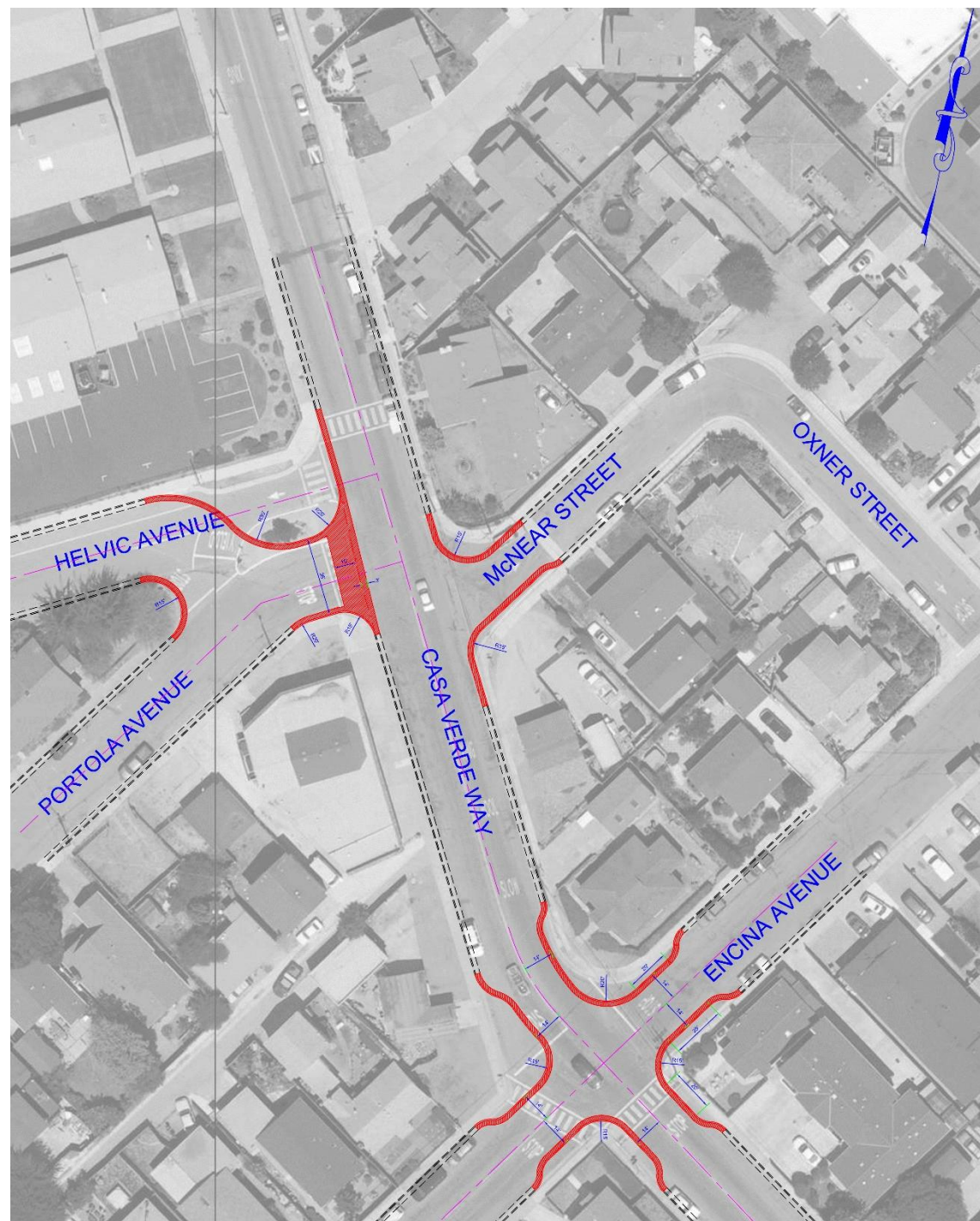
(Option C)



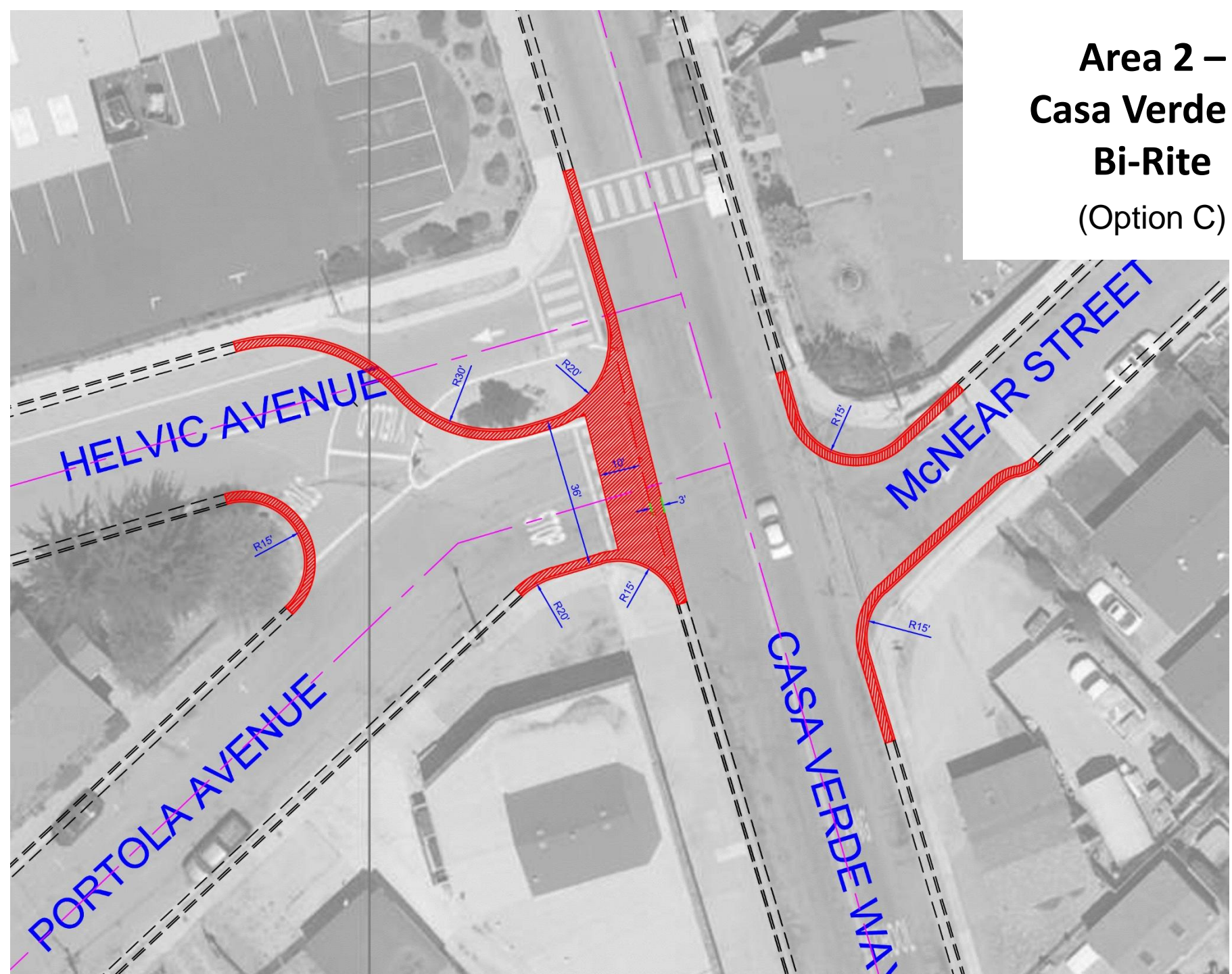
VILLA DEL MONTE REVITALIZATION/ADA STUDY

Workshop #2

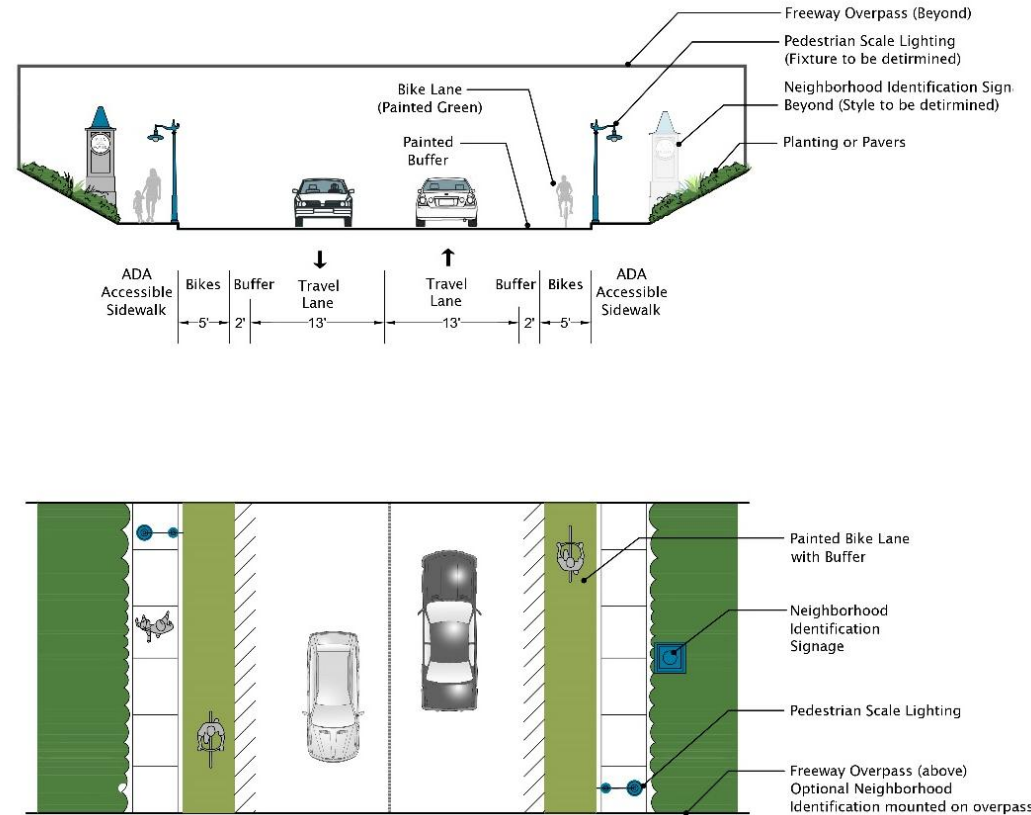
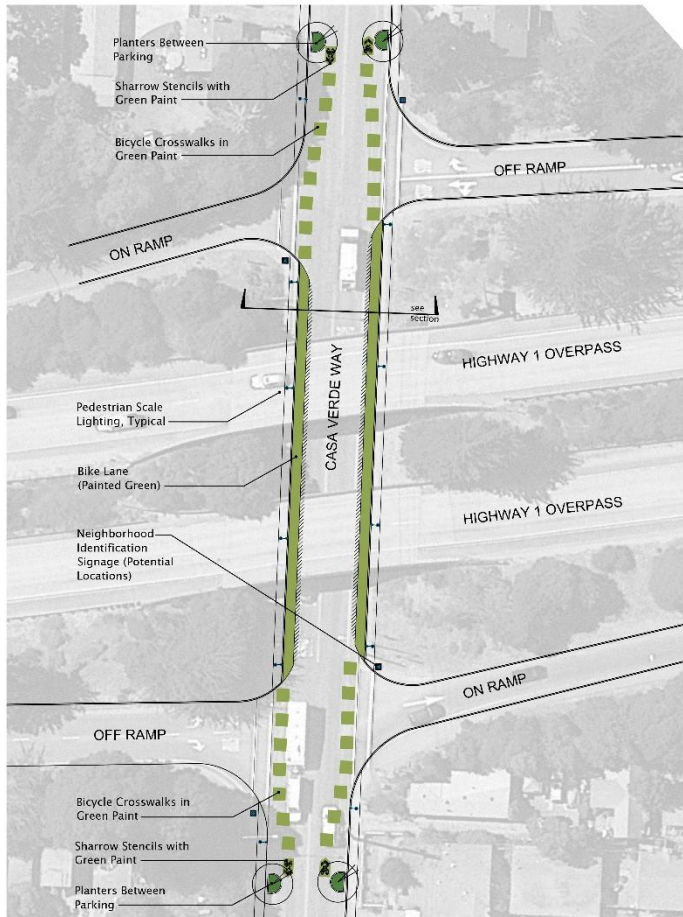
**Area 2 –
Casa Verde @
Bi-Rite
(Option C)**



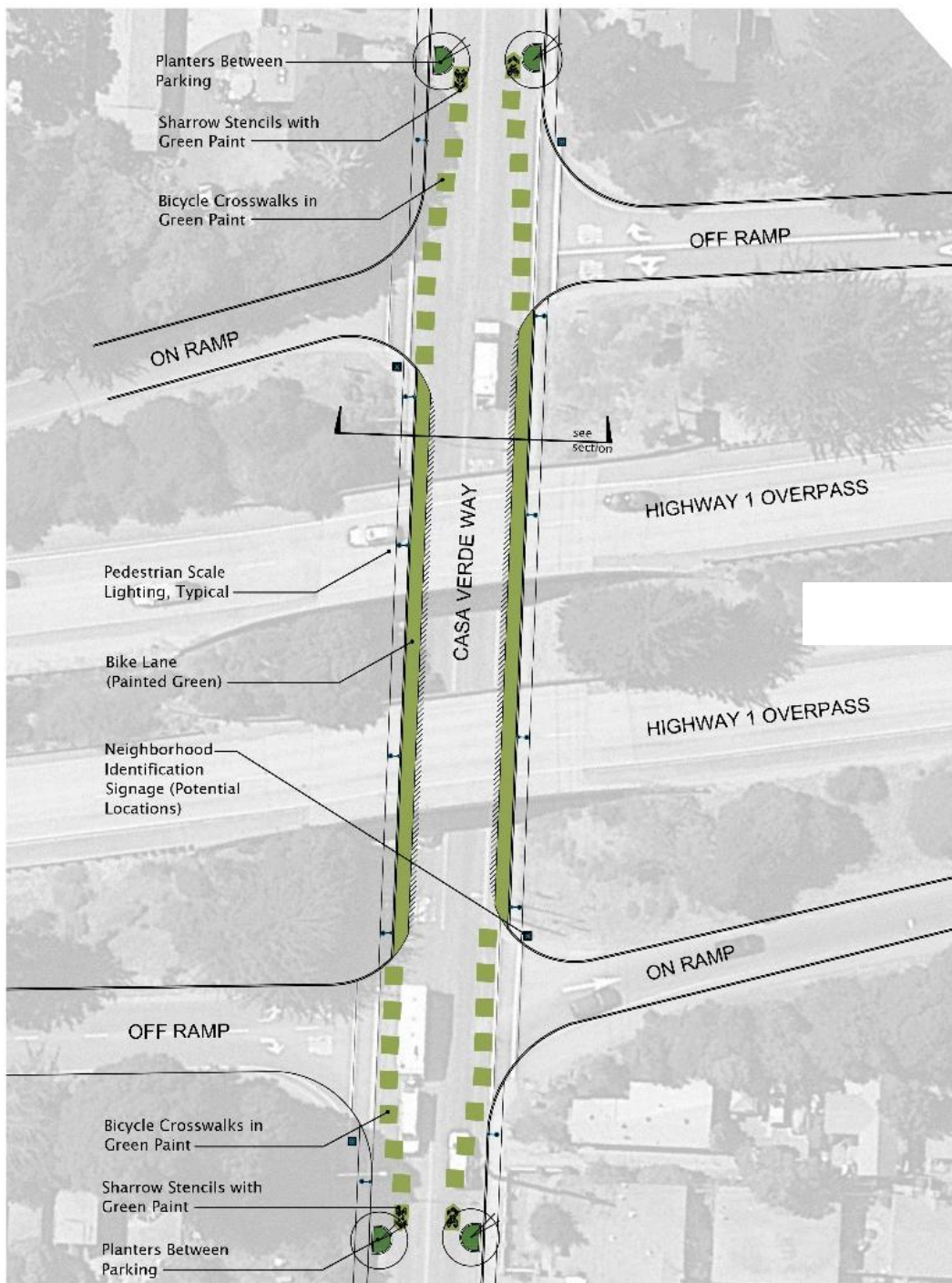
**Area 2 –
Casa Verde @
Bi-Rite
(Option C)**

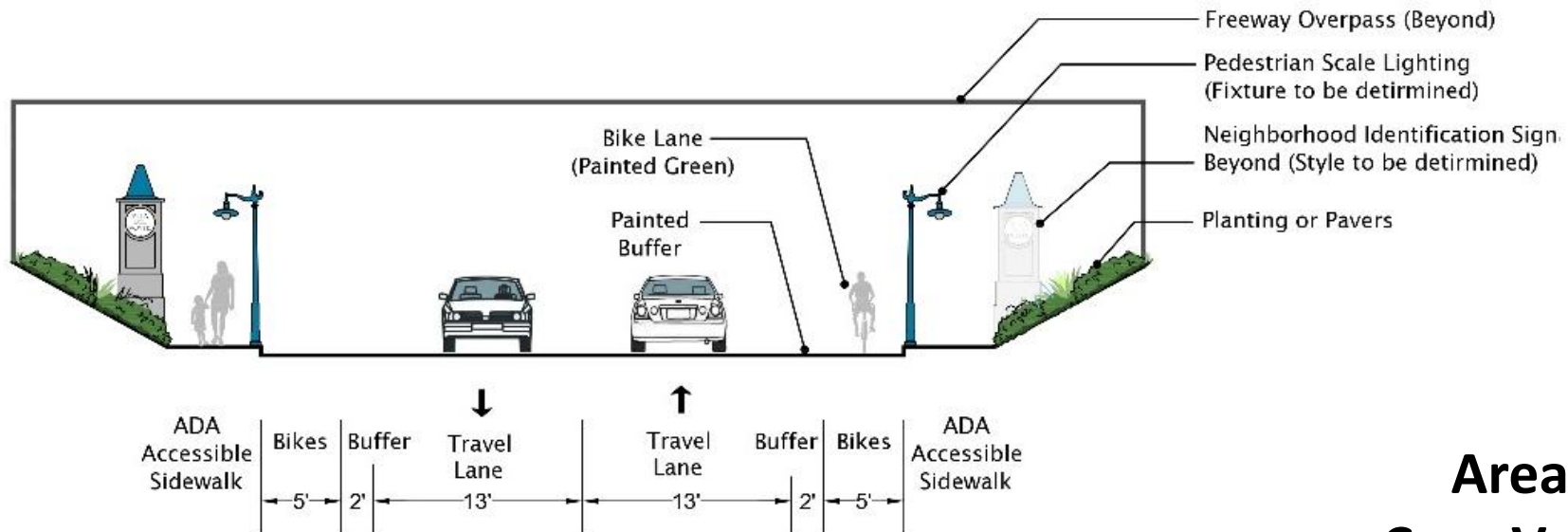


Area 3 – Casa Verde @ Highway 1

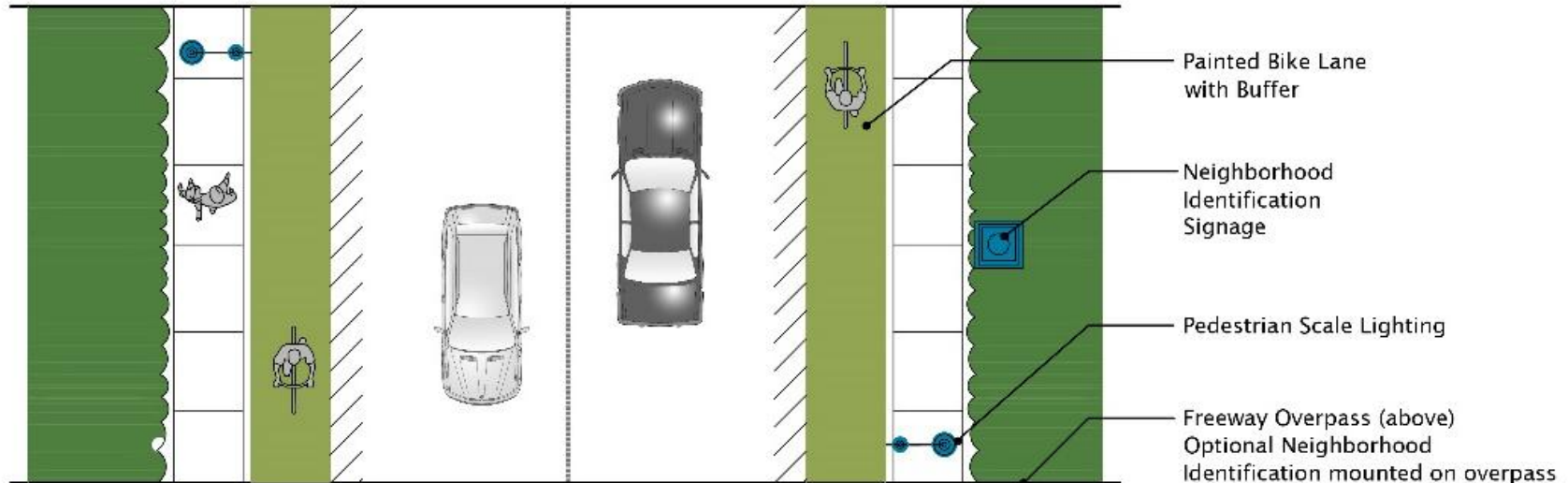


Area 3 – Casa Verde @ Highway 1

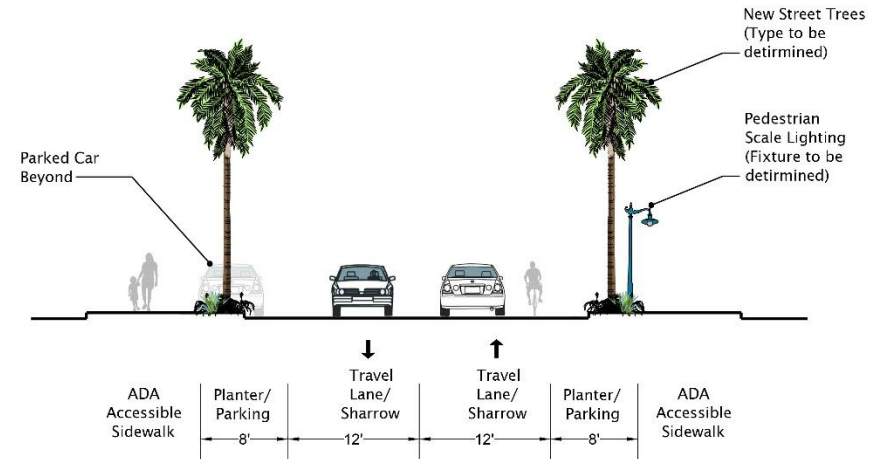
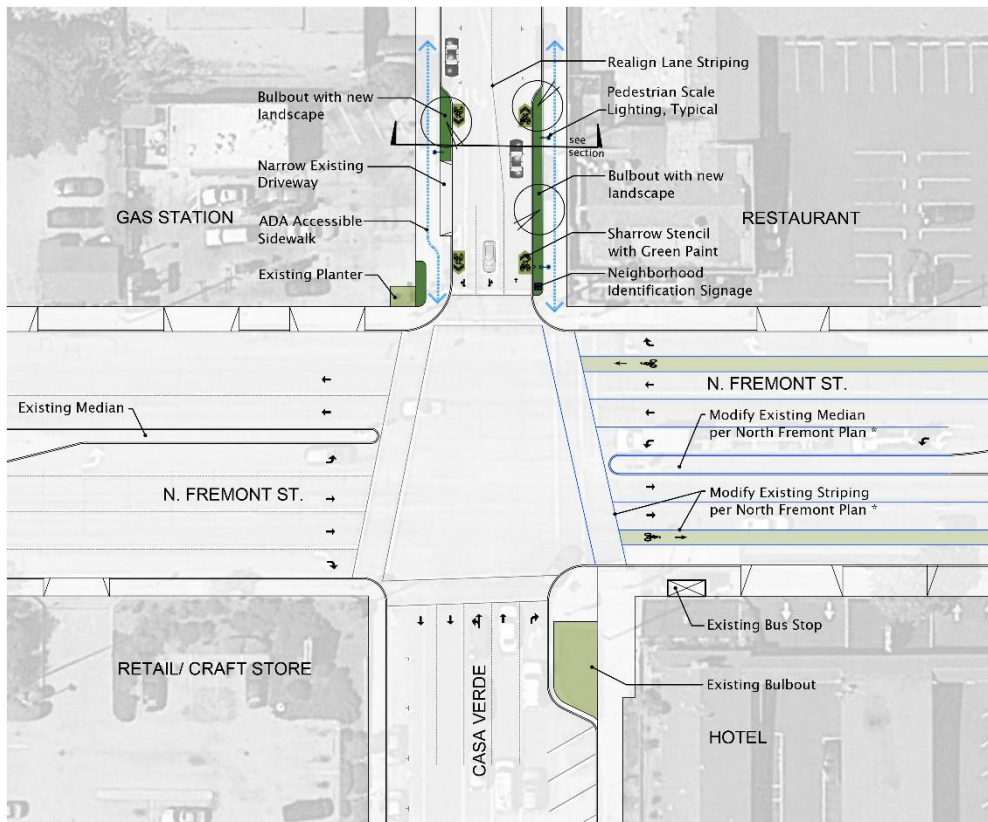




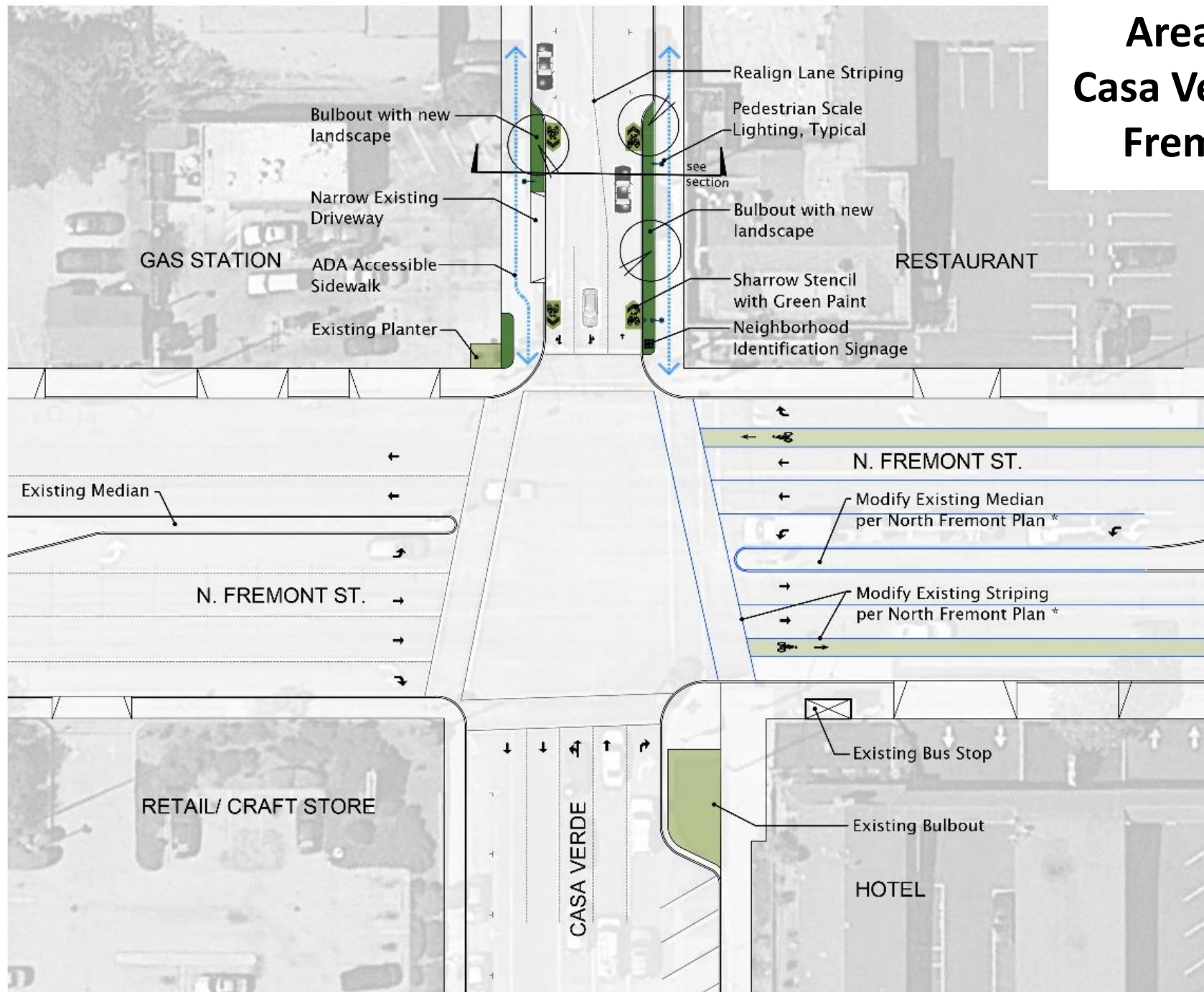
Area 3 – Casa Verde @ Highway 1



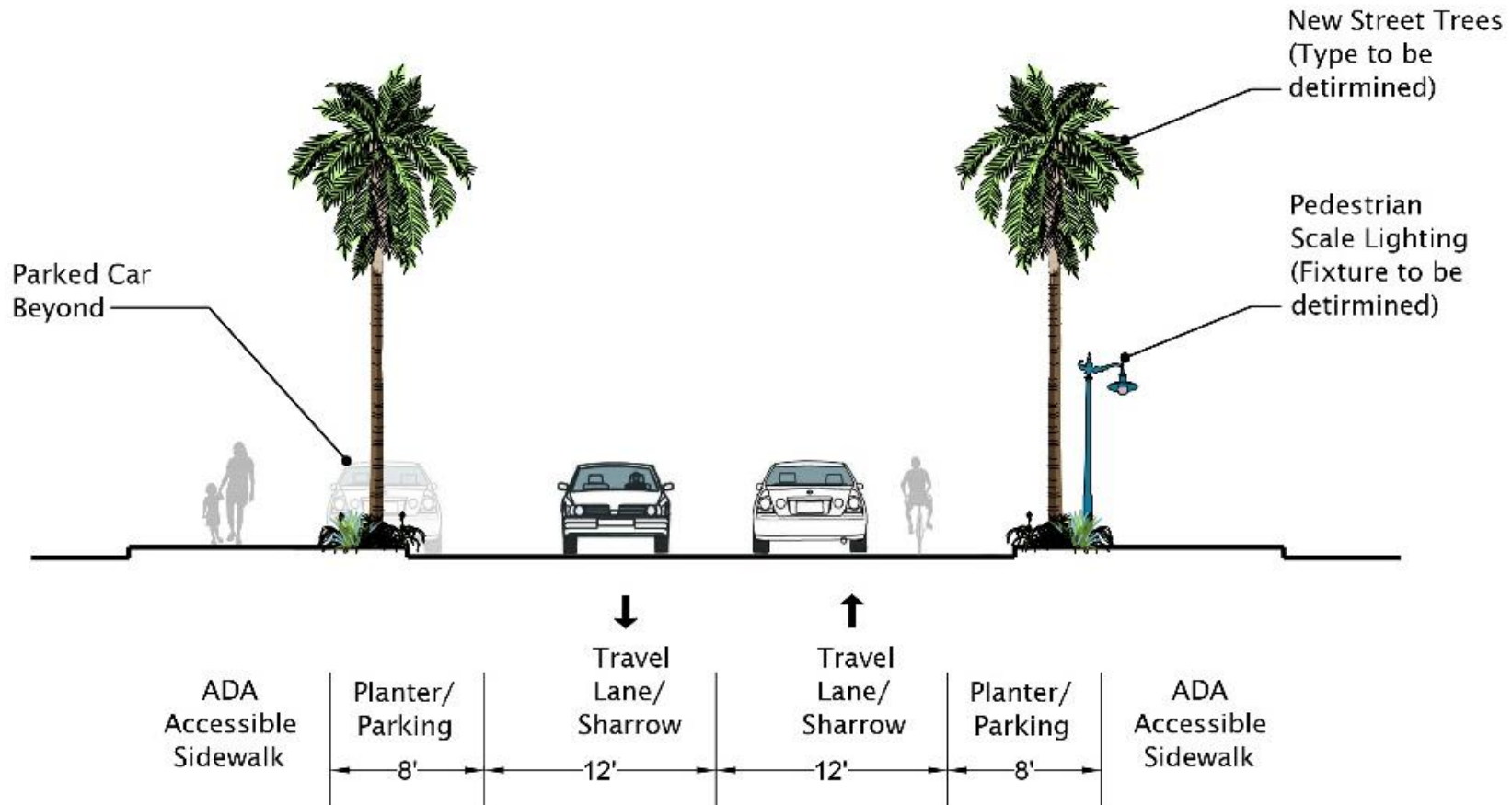
Area 4 – Casa Verde @ Fremont



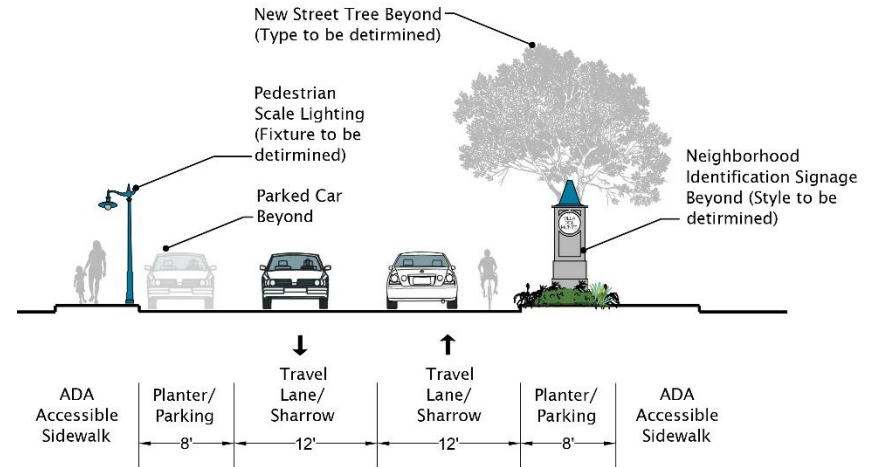
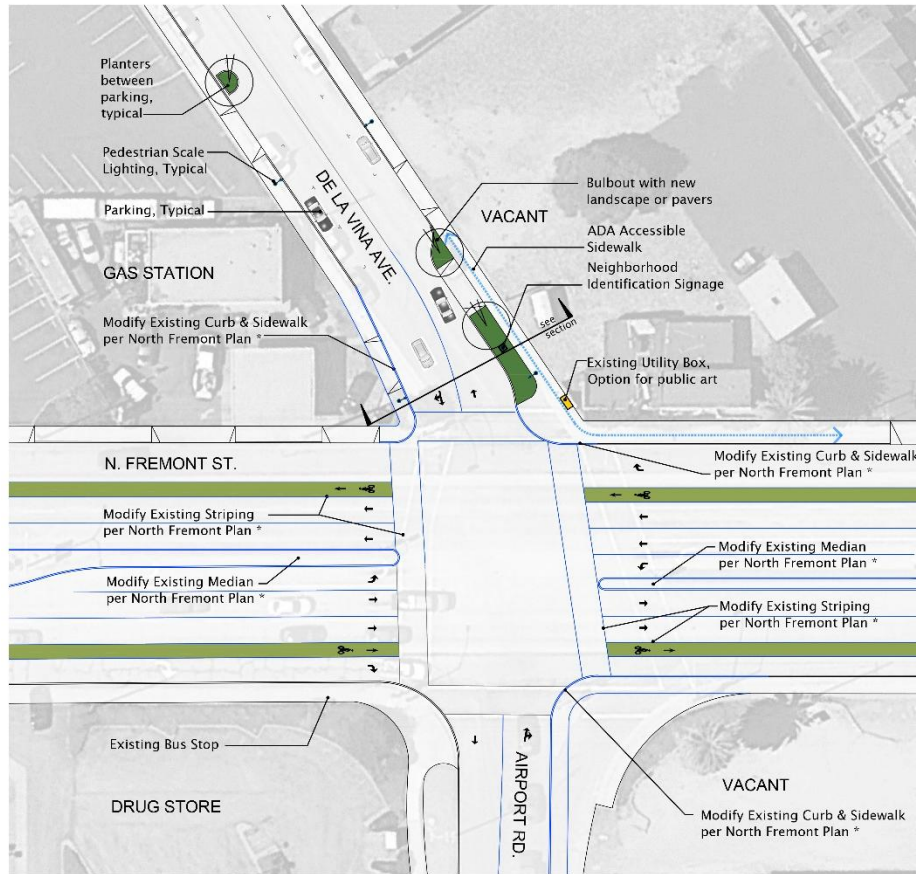
Area 4 – Casa Verde @ Fremont



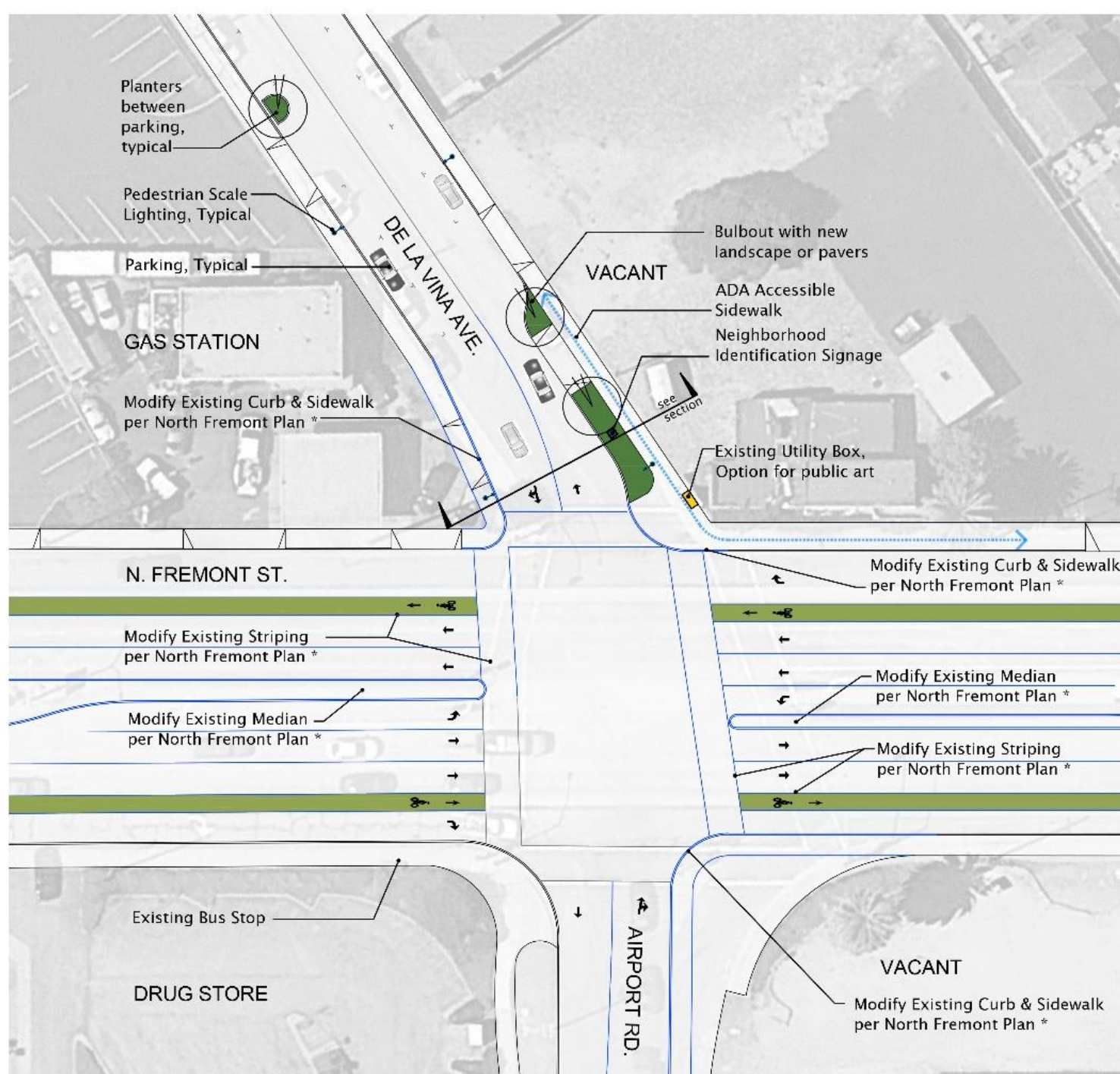
Area 4 – Casa Verde @ Fremont



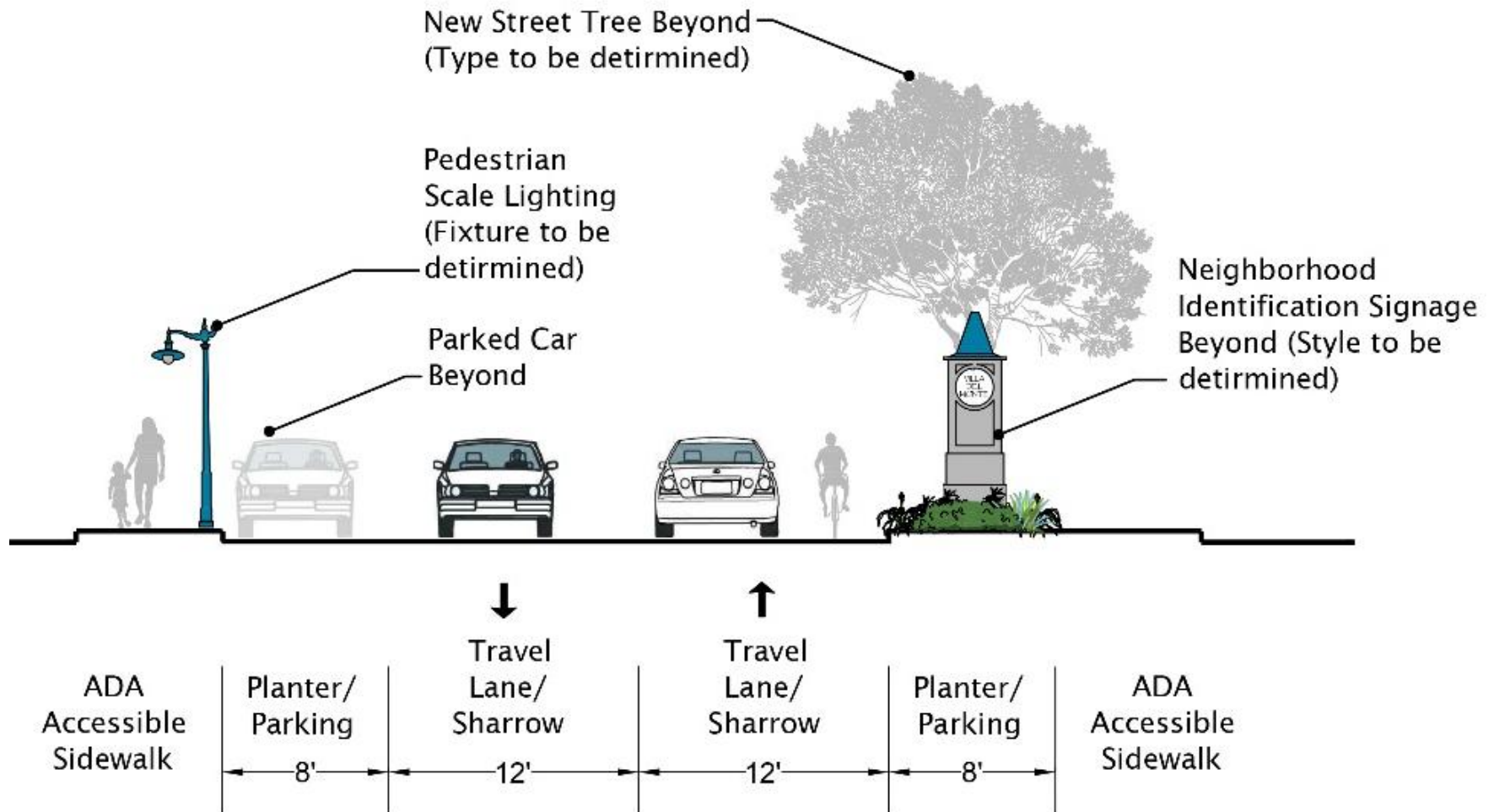
Area 5 – Dela Vina @ Fremont



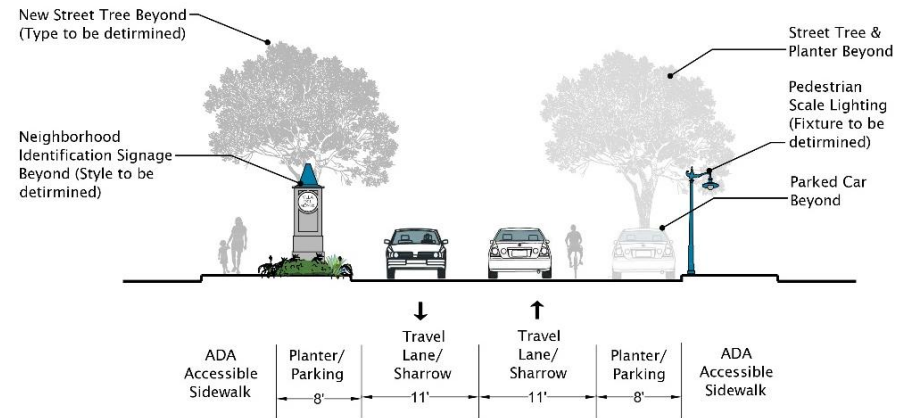
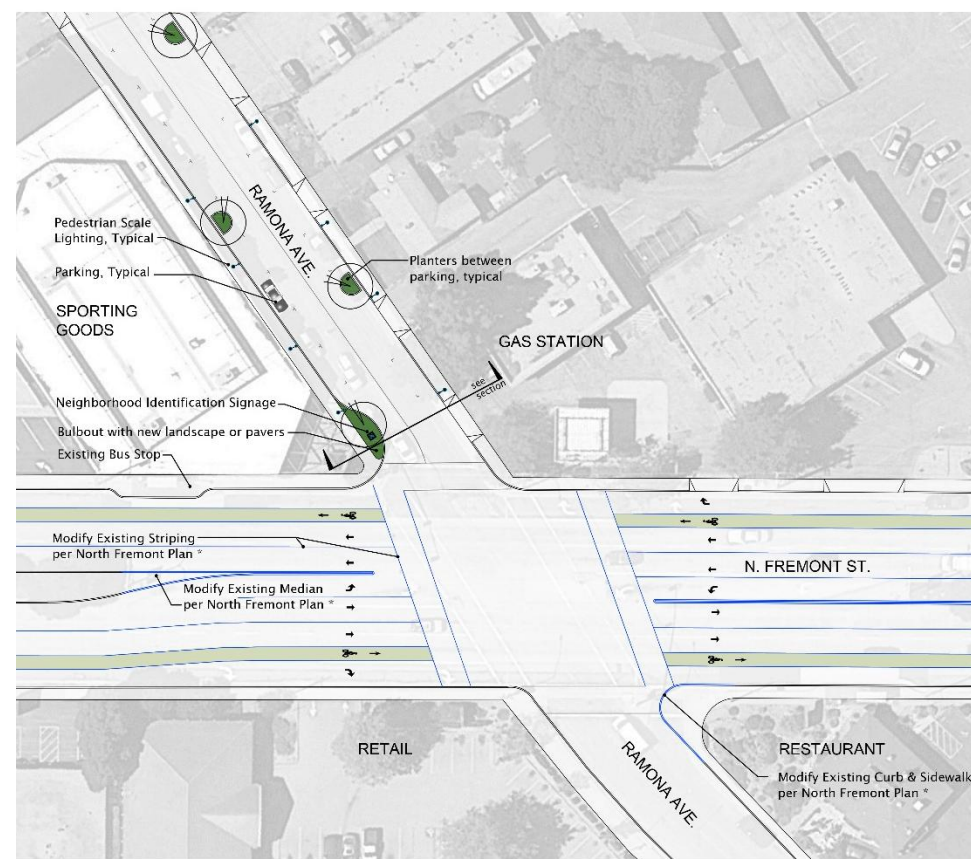
Area 5 – Dela Vina @ Fremont



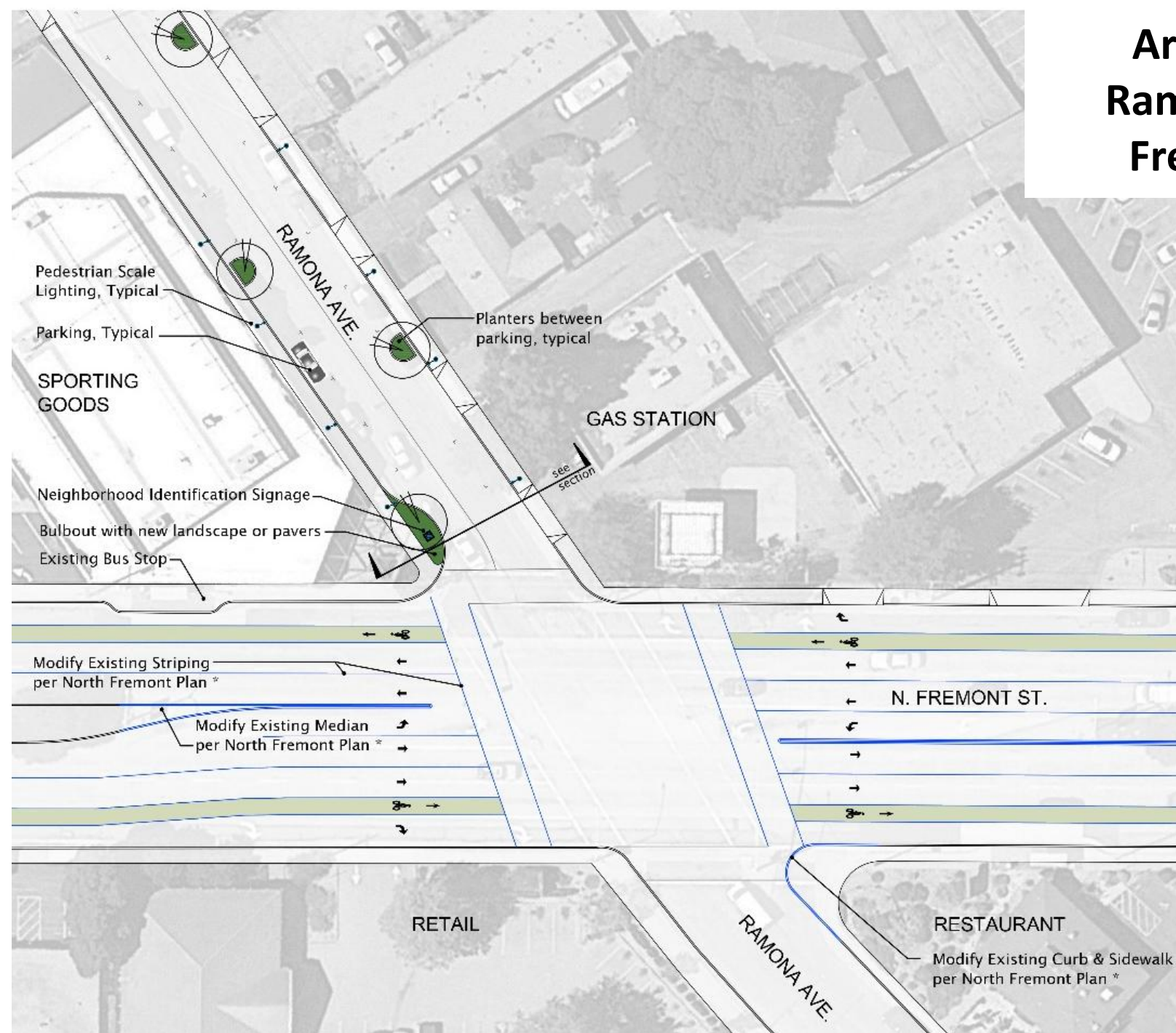
Area 5 – Dela Vina @ Fremont



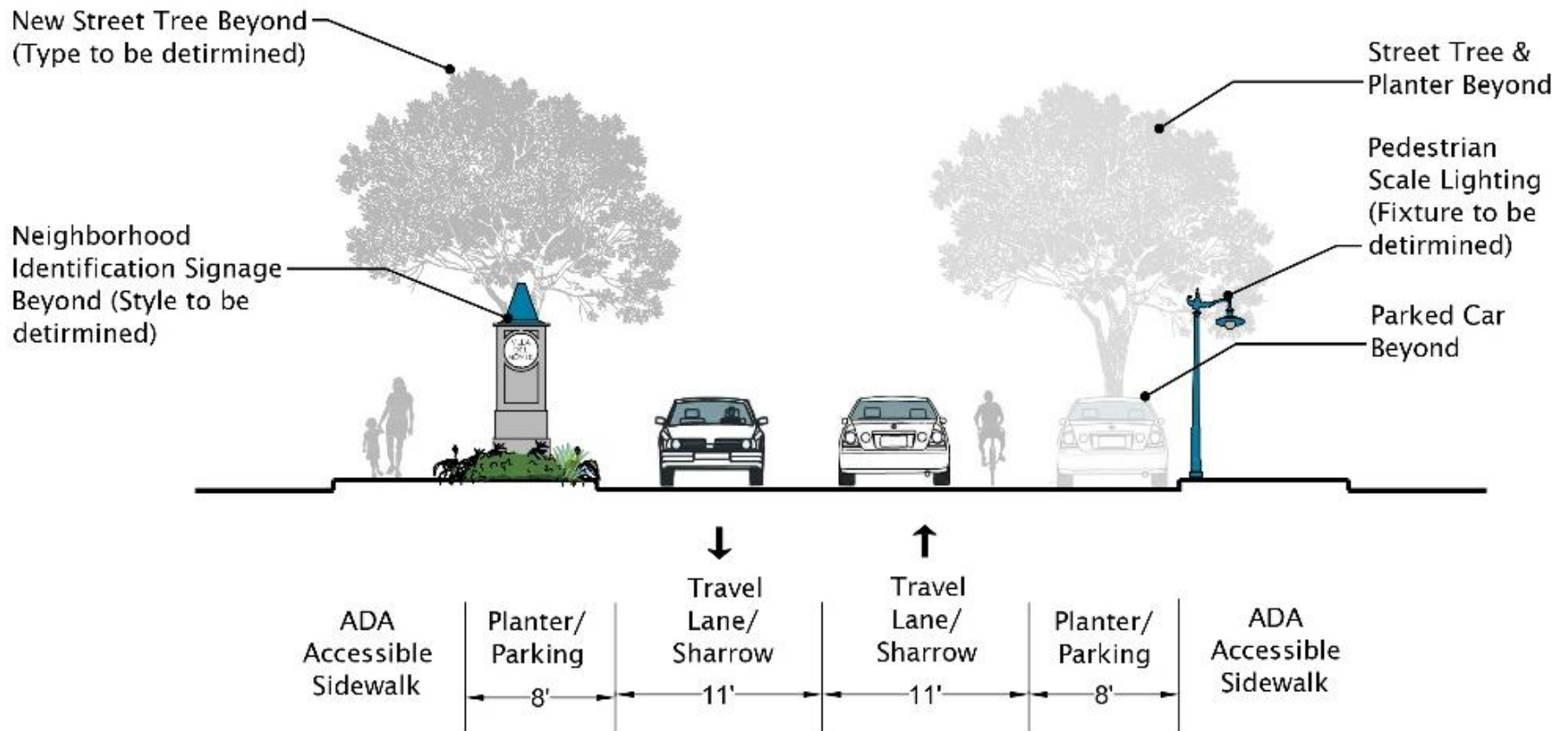
Area 6 – Ramona @ Fremont



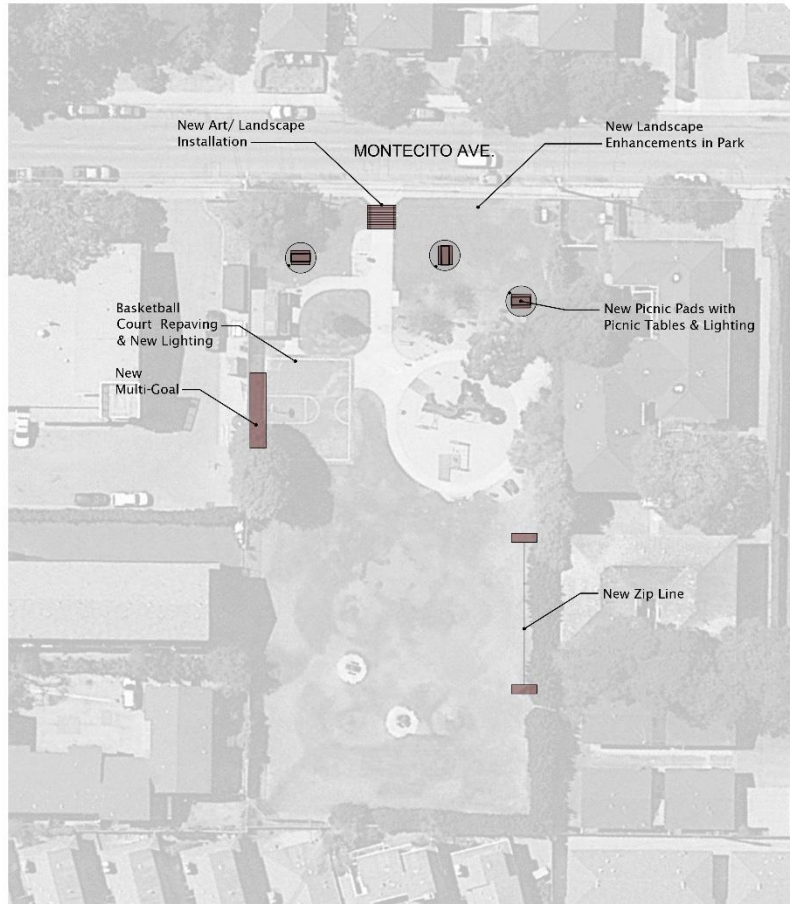
Area 6 – Ramona @ Fremont



Area 6 – Ramona @ Fremont

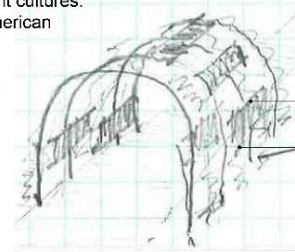


Area 7 – Montecito Park



Design Concept: "Entwined Future"
Vine trellis with panels expressing past and current cultures:

- Native American
- Spanish
- Mexican
- European



Art/ Landscape Installation Example
Park Entry Arbor



Zip Line Example



Basketball on Top



Soccer/ Roller Hockey
on Bottom

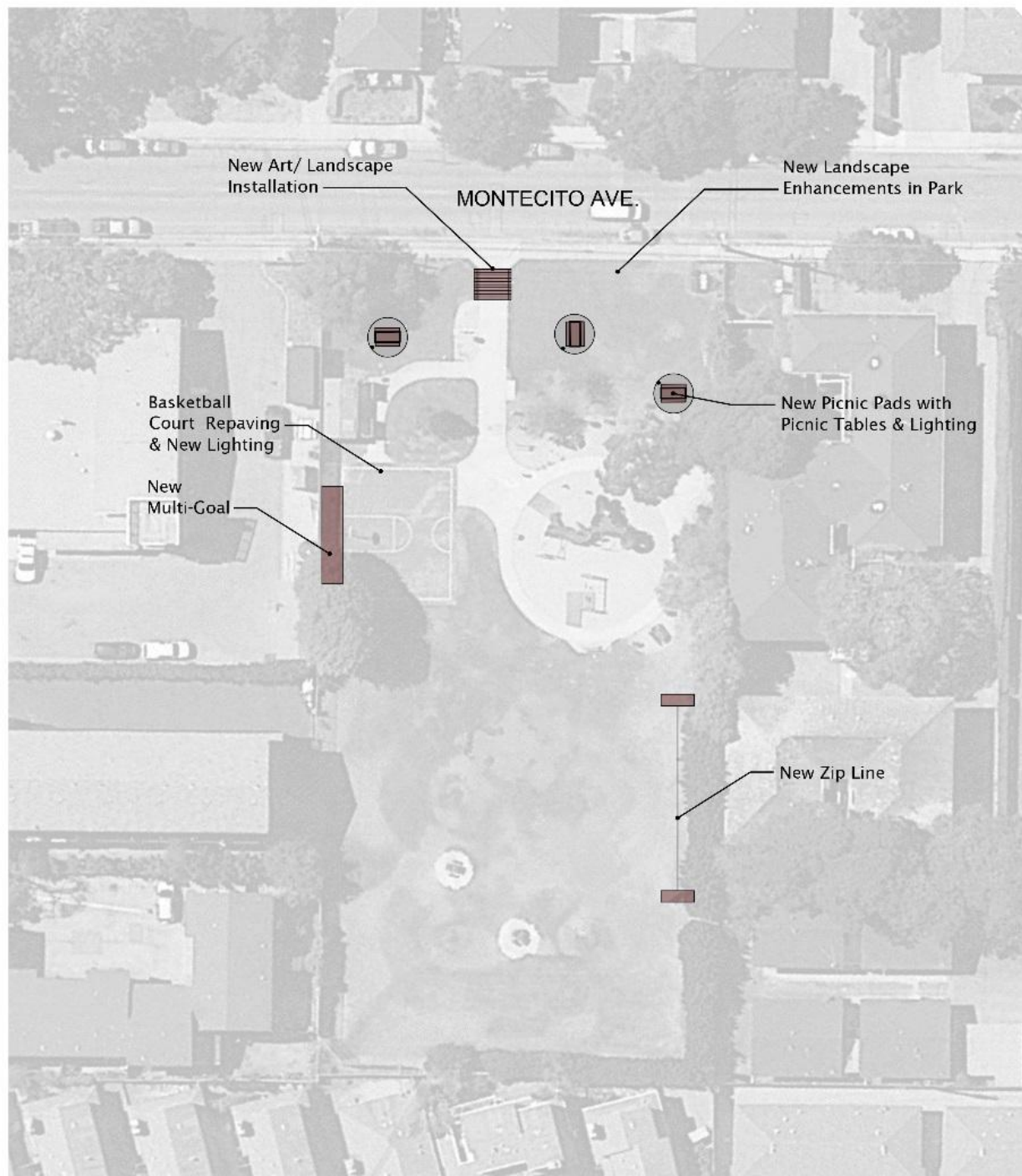


Multi-Goal Example

VILLA DEL MONTE REVITALIZATION/ADA STUDY

Workshop #2

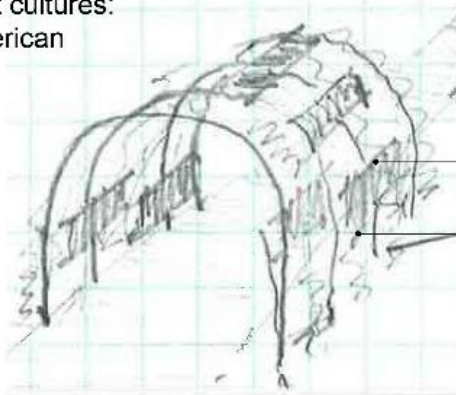
Area 7 – Montecito Park



Area 7 – Montecito Park

Design Concept: "Entwined Future"
Vine trellis with panels expressing
past and current cultures:

- Native American
- Spanish
- Mexican
- European



Art Panels

Vines

Art/ Landscape Installation Example
Park Entry Arbor



Zip Line Example



Basketball on Top

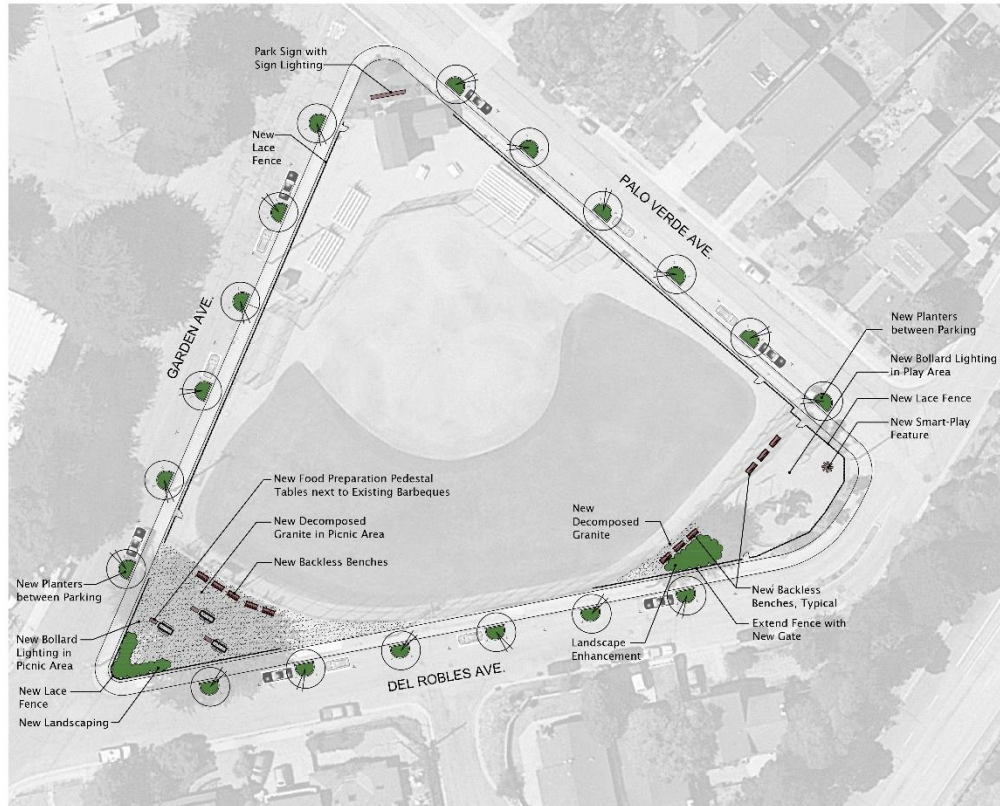


Soccer/ Roller Hockey
on Bottom

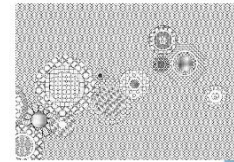


Multi-Goal Example

Area 8- Peter J. Ferrante Park



Bollard Lighting and
Backless Bench
Examples



Example Lace Fence Pattern
(Customize)



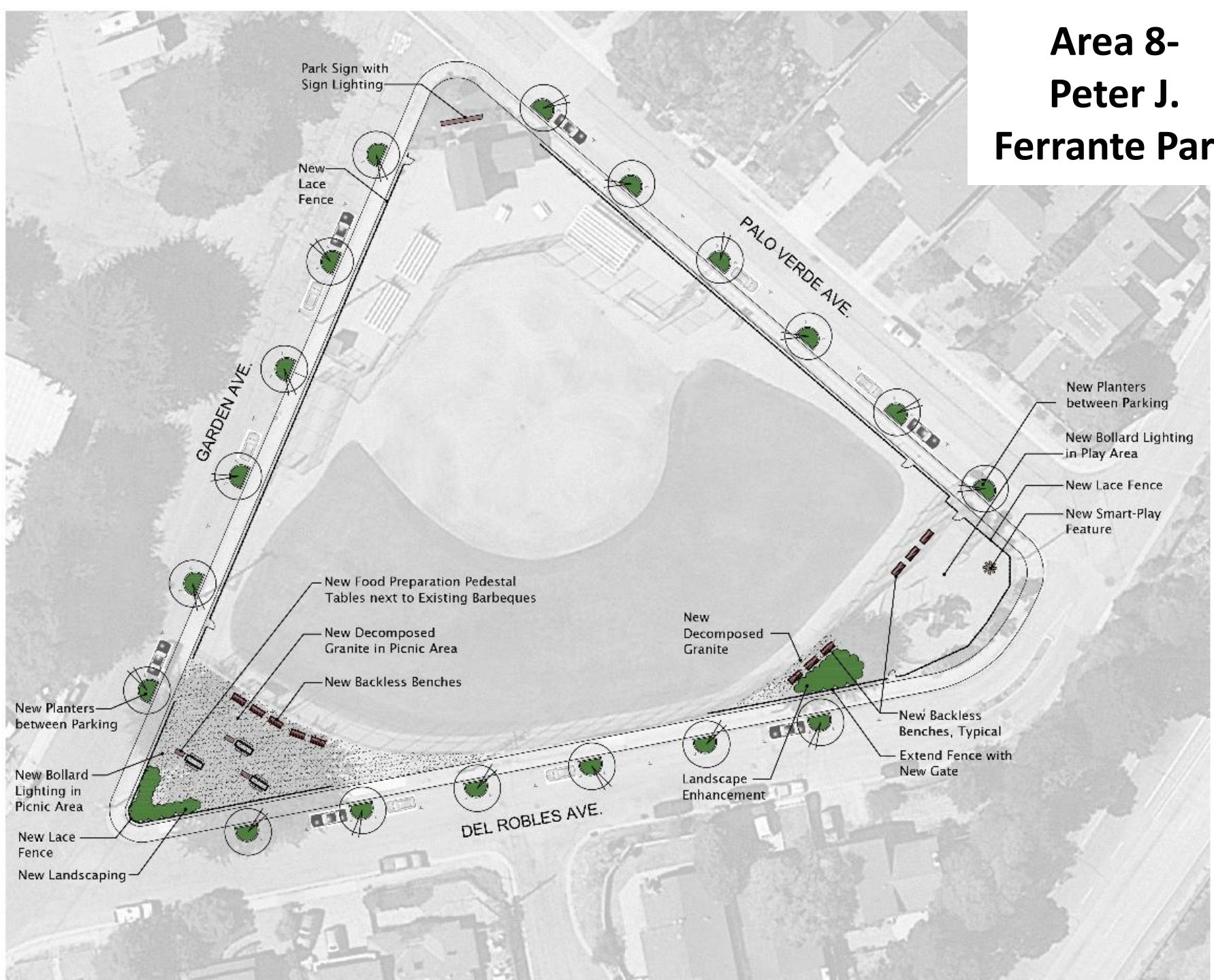
Smart Play Examples



Lace Fence Example

4' High
Maximum

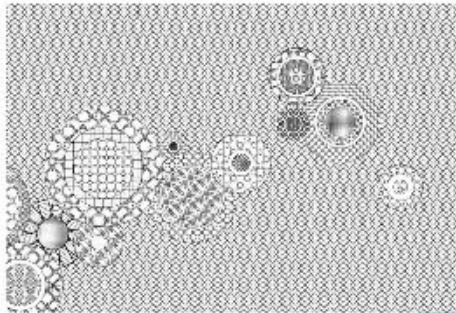
Area 8- Peter J. Ferrante Park



Area 8- Peter J. Ferrante Park



Bollard Lighting and
Backless Bench
Examples



Example Lace Fence Pattern
(Customize)



Lace Fence Example



Smart Play Examples

4' High
Maximum

Area 9 – Traffic Calming @ Encina

Traffic Calming Options:

- Narrow roadway at intersections
- Raised islands in the center of the roadway
- Barrier islands that prevent certain turning movements
- Physical barriers that restrict turns on to streets

Community Suggestions:

- Traffic Signage/ Striping
- Street lights



Traffic Calming Options:

- Narrow roadway at intersections
- Raised islands in the center of the roadway
- Barrier islands that prevent certain turning movements
- Physical barriers that restrict turns on to streets

Community Suggestions:

- Traffic Signage/ Striping
- Street lights

VILLA DEL MONTE REVITALIZATION/ADA STUDY

Workshop #2

Area 9 – Traffic Calming @ Encina

Traffic Calming Options:

- Narrow roadway at intersections
- Raised islands in the center of the roadway
- Barrier islands that prevent certain turning movements
- Physical barriers that restrict turns on to streets

Community Suggestions:

- Traffic Signage/ Striping
- Street lights



Traffic Calming Options:

- Narrow roadway at intersections
- Raised islands in the center of the roadway
- Barrier islands that prevent certain turning movements
- Physical barriers that restrict turns on to streets

Community Suggestions:

- Traffic Signage/ Striping
- Street lights

Area 10 – Traffic Calming @ Dela Vina

- Traffic Calming Options:
- Narrow roadway at intersections
 - Raised islands in the center of the roadway
 - Barrier islands that prevent certain turning movements
 - Physical barriers that restrict turns on to streets
- Community Suggestions:
- Increased driveway visibility
 - Traffic signage



Traffic Calming Options:

- Narrow roadway at intersections
- Raised islands in the center of the roadway
- Barrier islands that prevent certain turning movements
- Physical barriers that restrict turns on to streets

Community Suggestions:

- Increased driveway visibility
- Traffic signage

VILLA DEL MONTE REVITALIZATION/ADA STUDY

Workshop #2

Traffic Calming Options:

- Narrow roadway at intersections
- Raised islands in the center of the roadway
- Barrier islands that prevent certain turning movements
- Physical barriers that restrict turns on to streets

Community Suggestions:

- Increased driveway visibility
- Traffic signage

Area 10 – Traffic Calming @ Dela Vina



Traffic Calming Options:

- Narrow roadway at intersections
- Raised islands in the center of the roadway
- Barrier islands that prevent certain turning movements
- Physical barriers that restrict turns on to streets

Community Suggestions:

- Increased driveway visibility
- Traffic signage

Prioritize Neighborhood Improvements

- Vote your top six

1st Choice



LARGE DARK GREEN DOT
6 Points

4th Choice



SMALL ORANGE DOT
3 Points

2nd Choice



SMALL LIGHT GREEN DOT
5 Points

5th Choice



SMALL YELLOW DOT
2 Points

3rd Choice



SMALL BLUE DOT
4 Points

6th Choice



SMALL RED DOT
1 Point

VILLA DEL MONTE REVITALIZATION/ADA STUDY

Workshop #2

Next Steps

- February: Neighborhood Association to submit to N.I.P.
- Design team will continue to refine Neighborhood Revitalization Plan
- April: Community Workshop #3

VILLA DEL MONTE REVITALIZATION/ADA STUDY

Workshop #2